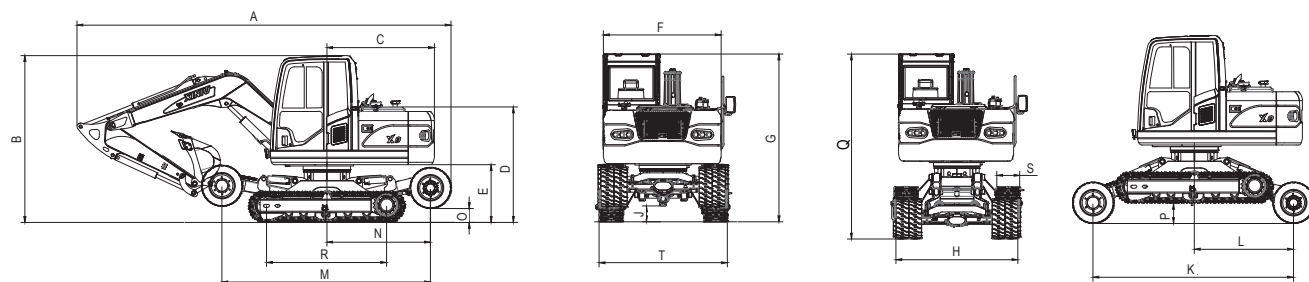


X9

WHEEL- CRAWLER EXCAVATOR

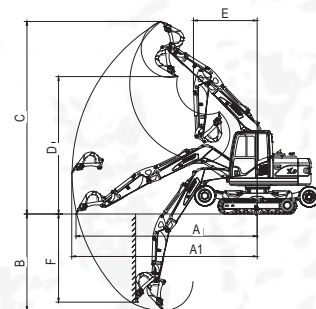
National toll-free **+593 99 944 6519**



Main dimensions schematic diagram

Main Dimension	Unit: mm	Especification	Unit
A Total length		Machine Weight	8510 kg 8840kg
3.5m+2.00m Boom3.5m+Bucket arm 2m	6570	Bucket capacity	0.3 m³
B Total height		Model	Yanmar 4Tn V98-ZCs LKC
3.5m+2.00m Boom3.5m+Bucket arm 2m	2982	Displacement	3.319L
C Counter weight turning radius	1836	Engine power/rpm	46.3kW/2200 rpm
D Engine hood height	2104	Max. torque	223.3 ~ 243.5n.m/1600 ± 100 rpm
E Counter weight ground clearance	1120	Model	Yanmar 4Tn V98T-ZCs TYC
F Upper structure width	2000	Displacement	3.319L
G Cabin height (wheels up)	2982	Rated power / speed	56.5kW /2200 rpm
H Tire width	2120	Max. torque	273.3 ~ 298.2n.m/1650 ± 100rpm
J Minimum ground clearance	270	Wheel travelling speed	21 km/h
K Wheels up wheel gauge	3400	Track travelling speed	3 km/h
L Distance of swing center to rear wheel (wheels down)	1682	Swing speed	9rpm
M Wheels down wheel gauge	3560	Max. grade ability	30°
N Distance of swing center to rear wheel (wheels up)	1767	Hydraulic system	Rexroth
O Rear wheel ground clearance (wheels up)	300	Pump	X1 variable capacity pump
P Tracks ground clearance (wheels down)	330	Pressure	25 MPa
Q Total height (wheels down)	3190	Displacement	132 L/min
R Track wheel base	2050	Hydraulic oil tank capacity	175 L
S Track width	400	Fuel tank capacity	150 L
T Track outer width	2160	Engine oil capacity	12 L

Operating Range	Unit: mm
Working device	3.5m+2m Boom 3.5m+arm 2m
a1 Max. digging radius	6680
a Max. digging radius on ground	6555
B Max. digging depth	3572
C Max. Cutting height	6955
d Max. dumping height	5245
e Min. turning radius	2540
F Max. vertical digging depth	3255
(Kn) Bucket digging force	56
(Kn) Bucket arm digging force	36



Working range schematic diagram

CAIMAN

MAQUINARIA CAIMAN
Teléfono +593 99 944 6519
vjaramillo@maquinariacaiman.com
ventas01@maquinariacaiman.com
www.maquinariacaiman.com
Calle N73 # E5-164 y Eloy Alfaro / Quito - Ecuador

EXCAVADORA

CAIMAN



X9

WHEEL- CRAWLER
EXCAVATOR

X9

WHEEL- CRAWLER EXCAVATOR

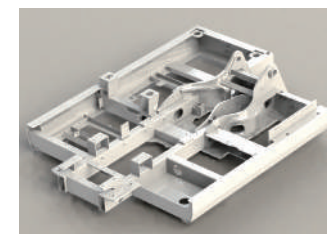
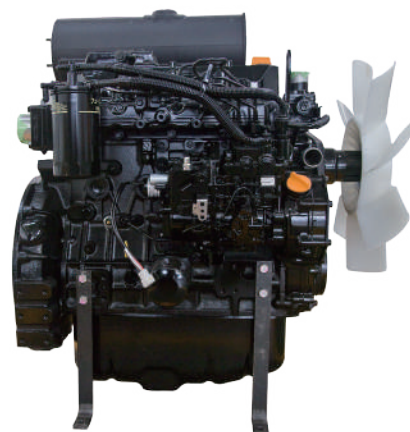
Ce ISO TUV

Well-known Trademark

Stronger power, lower fuel consumption

Japanese Yanmar engine

adopting strong power Yan MaR Tn V direct injection diesel engine, green emission, high power output . Through the improvement of fuel injection system, the exhaust emission standard can meet requirements of various countries. Low noise design makes operation beneficial to health and environmental protection.



After the finite element analysis, the structure of the upper turntable and the working device is more reasonable, which greatly improves the strength and toughness of the turntable and the working device.

Parataxis radiator, full steel mesh back door, increase ventilation, improving the cooling efficiency, the back lights hidden inside the counterweight completely, avoiding the the collision at the complex conditions working.



Imported international brand plunger pump、main valve, quick moving, compound movement harmoniously, high reliability, long service time.

New upgraded cab, beautiful appearance, indoor ergonomic design, front gear shifting mechanism, adjustable suspension seat, air conditioning, large screen LCd , wide vision, more comfortable operation.



The overall box-type structure chassis, with reinforced front and rear driven axles, reinforcement gearbox、reinforcement up and down box, more load carry capacity.

Front and rear driven axles with hub reduction, more passing ability, suitable for complex road, more driving power, suitable for climbing.

