

YC4A110-T300 (A510T8) 柴油机

零件图册

Parts Catalogue of YC4A110-T300 (A510T8) Diesel Engine

广西玉柴机器股份有限公司

GuangXi Yuchai Machinery Co., Ltd.

2022 年 01 月

Jan, 2022

前 言 Foreword

感谢您选用广西玉柴机器股份有限公司的产品，并感谢您阅读《YC4A110-T300 (A510T8) 柴油机零件图册》！

Thanks for using Yuchai engine and reading the “Parts Catalogue of YC4A110-T300 (A510T8) Diesel Engine”！

玉柴的服务宗旨是：“倾我所有、尽我所能、竭诚用户、诚信天下”，为了更好地履行玉柴的服务宗旨，我们编印了《YC4A110-T300(A510T8) 柴油机零件图册》，希望本图册可以让用户更好地认识了解玉柴产品的结构与配置，方便用户使用、维修和购置零配件。

With the aim to fulfill our company service tenet, i. e. “striving all out to serve the customers, spending full sincerity to confidence the world”, we compiled and printed this “Parts Catalogue of YC4A110-T300 (A510T8) Diesel Engine”. We hope this “Parts Catalogue of YC4A110-T300 (A510T8) Diesel Engine” will help you to understand the structure and configuration of Yuchai’s YC4A110-T300 (A510T8) diesel engines, so to operate and maintain them easily for your reference only.

本零件图册是根据 2022 年 1 月相关生产图样、资料编制而成的。图册中列出了 YC4A110-T300 (A510T8) 柴油机的全部零部件目录。

This “Parts Catalogue of YC4A110-T300(A510T8) Diesel Engine” is compiled by basing on the production samples and technical documents in January 2022, and covers the engine model of YC4A110-T300 (A510T8) diesel engine.

随着产品的不断改进提高和用户不断提出新的要求，《YC4A110-T300 (A510T8) 柴油机零件图册》中的有关内容将会有不同程度的变更，玉柴保留在不预先通知的情况下进行修改的权利，具体配置情况应以当时产品技术文件为依据。

As production improvements and consumer’s requirements are constantly brought up, the content of this “Parts Catalogue of YC4A110-T300 (A510T8) Diesel Engine” must be changed at a certain extent, which Yuchai reserves the right to modify without formal notification beforehand. The engine’s idiographic configuration is according to its technical documents.

本零件图册编写不足之处在所难免，敬请提出批评意见，使之渐臻完善。谢谢！

Deficiencies may appear in this “Part Catalogue of YC4A110-T300 (A510T8) Diesel Engine”，and your comments and suggestions are appreciated honestly!

广西玉柴机器股份有限公司
GuangXi Yuchai Machinery Co., Ltd.

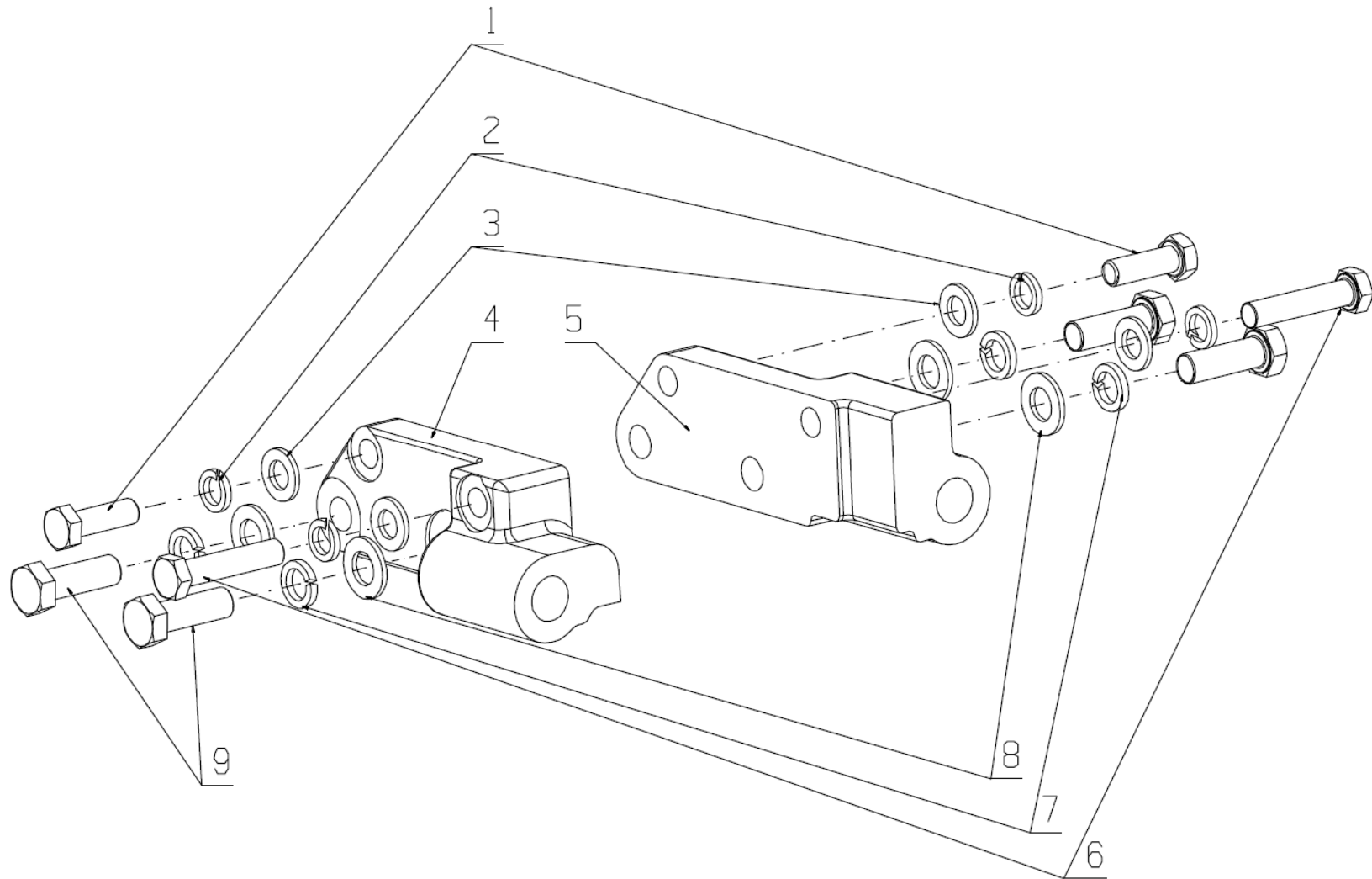
目 录 CONTENTS

序号 No.	图号 Part No.	名 称	Part Name	页数 Page	备注 Remark
1	A50900-1001000	发动机悬置总成	Engine Mounting Assembly	5	
2	A510T8-1002000	气缸体总成	Cylinder Block Assembly	7	
3	A50000-1003000	气缸盖总成	Cylinder Head Assembly	13	
4	A51EY0-A003000	气缸盖罩总成	Cylinder Head Cover Assembly	15	
5	AYK000-A004000	吊耳总成	Hanger Assembly	17	
6	A50000-1004000	活塞及连杆总成	Piston and connecting rod assembly	19	
7	A50900-1005000	曲轴减振器总成	Crankshaft Vibration Damper Assembl	21	
8	A8600-1006000	凸轮轴总成	Camshaft Assembly	23	
9	B8800-1007000	配气机构总成	Valve Train System Assembly	25	
10	A51000-1008000	进排气管总成	Intake And Exhaust Manifold Parts Assembly	28	
11	AVJ00-1009000	油底壳总成	Oil Sump Assembly	30	
12	AYK200-1010000	机油集滤器总成	Oil Strainer Assembly	32	
13	A60B00-1011000	机油泵总成	Oil Pump Assembly	34	
14	S52FB-1012000	机油滤清器总成	Oil Filter Part	36	
15	A50000-1013000	机油冷却器总成	Oil Cooler Assembly	38	
16	A51E00-1014000	曲轴箱通风装置总成	Crankcase ventilation installation assembly	41	
17	A50900-1015000	发动机起动辅助装置总成	Engine Start Auxiliary Device Assembly	43	
18	AVJ00-1028000	油标尺总成	Oil Dipstick Assembly	45	

19	A51KS8-1104000	供给系管路总成	Fuel Supply lines Assembly	47	
20	A509TB-1105000	柴油滤清器总成	Fuel filter assembly	49	
21	A509TB-A104000	进油软管总成	Oil Inlet Hose Assembly	51	
22	A50KT2-1111000	喷油泵总成	Fuel Injection Pump Assembly	53	
23	A51E00-1112000	喷油器总成	Fuel Injector Assembly	55	
24	A51000-1118000	增压器总成	Turbocharger Assembly	57	
25	AVKT6-1201000	消声器总成	Muffler assembly atlas	60	
26	AVJ0T0-1207000	废气再循环系统总成	Exhaust Gas Recirculation Assembly	62	
27	631-1305000	放水开关总成	Water Drain Assembly	64	
28	A50000-1306000	调温器总成	Thermostat assembly	66	
29	AVJ00-1307000	水泵总成	Water Pump Assembly	68	
30	AVJ00-1308000	风扇总成	Fan Assembly	70	
31	AVJ00-1600000	动力输出总成	Power Output Assembly	72	
32	AVJ00-3701000	发电机总成	Alternator assembly	74	
33	AVJ00-3708000	起动机总成	Starter Assembly	76	
34	A510T8-3823000	控制系统总成	Controlling System Assembly	78	
35	AVJ00-8104000	空调压缩机总成	air-conditioning compressor Assembly	81	

EWP=Easy wear part (易损件)

A50900-1001000 / 发动机悬置总成 Engine Mounting Assembly

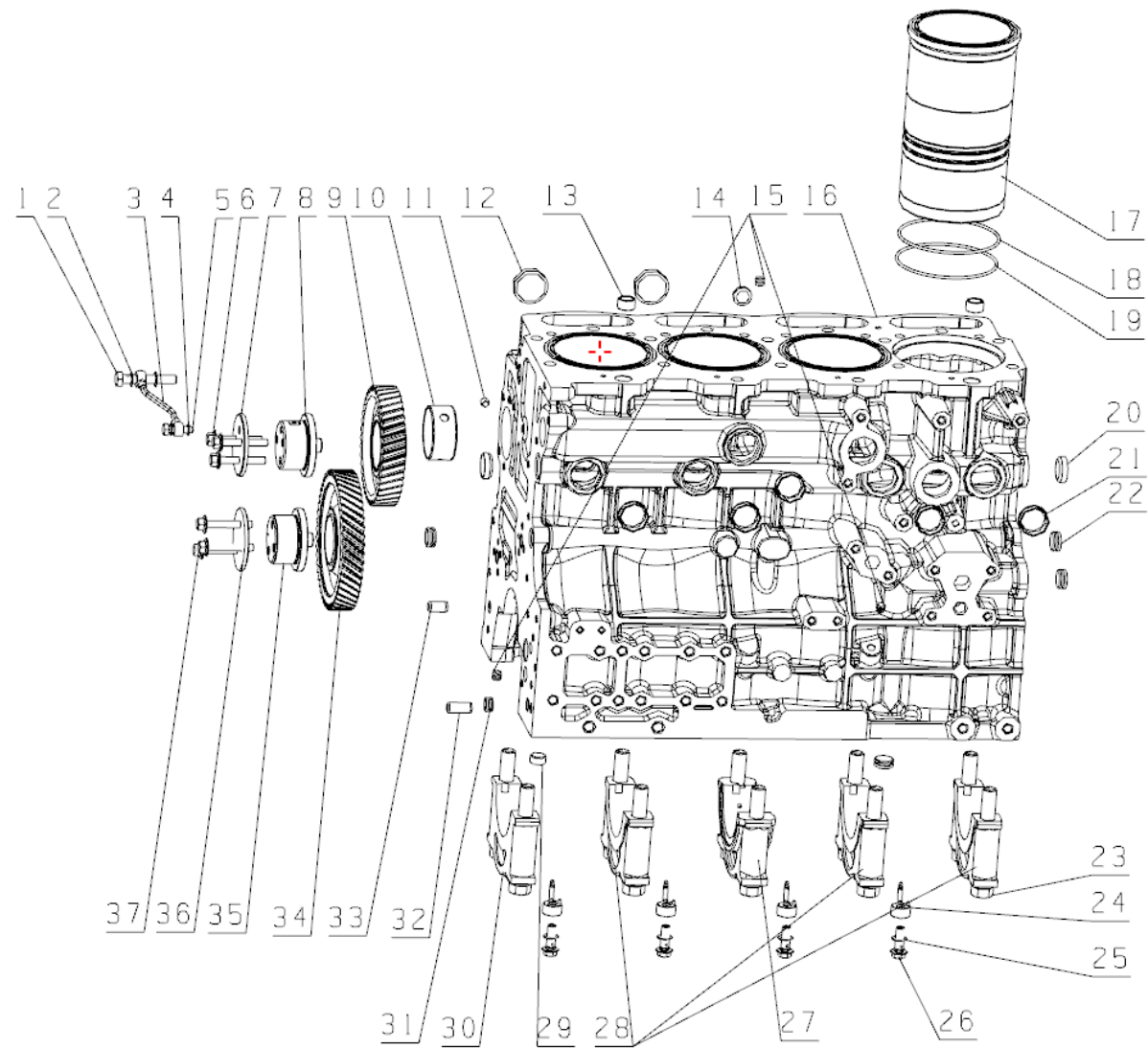


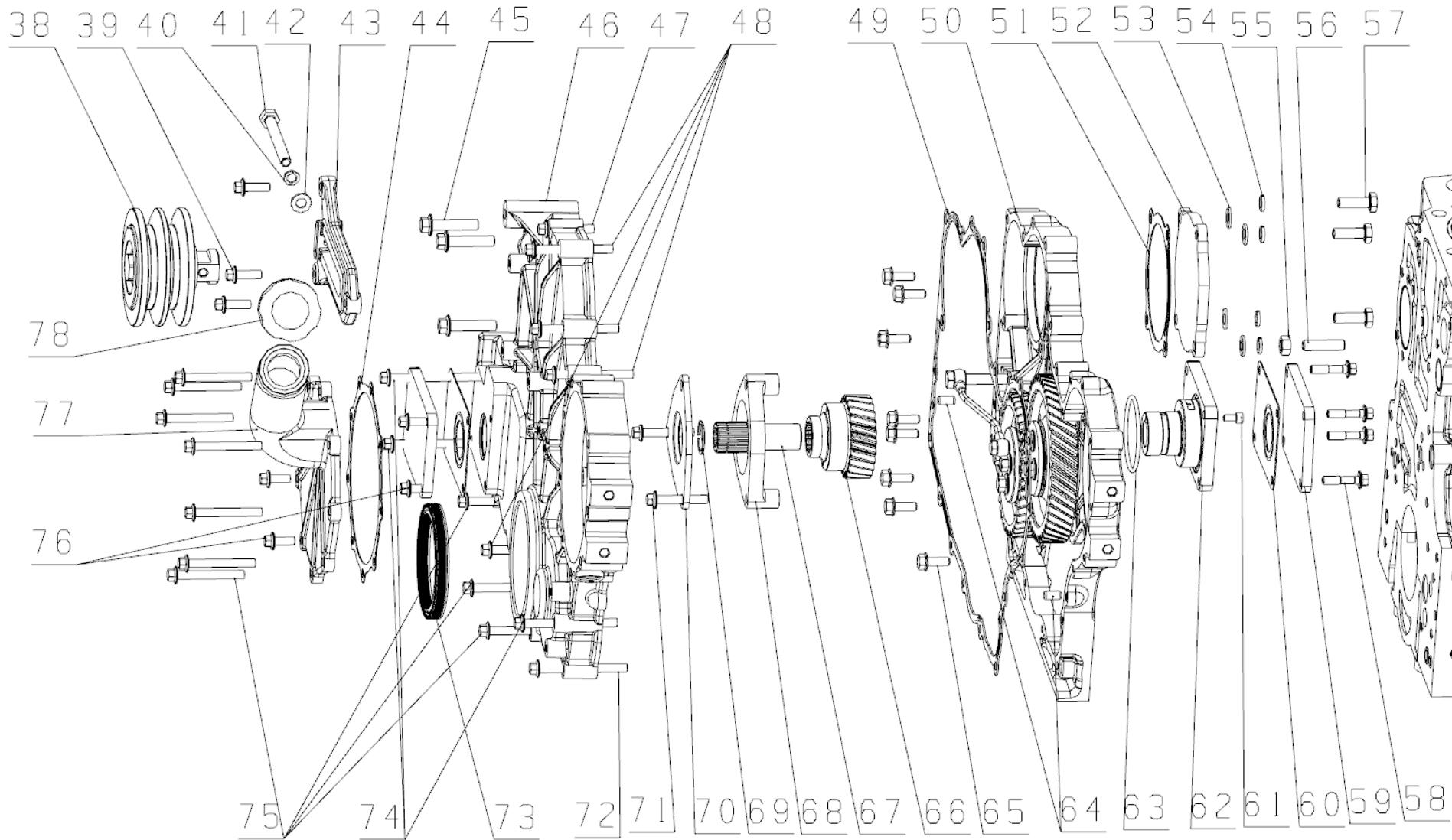
A50900-1001000 / 发动机悬置总成 Engine Mounting Assembly

序号 NO.	图号 Part No.	名称	Part Name	数量 Qty	备注 Remark
1	Q150B1235	螺栓 M12×35	Bolt M12×35	2	
2	Q40312	垫圈 12	Gasket 12	4	易损件 EWP
3	Q40112	垫圈 12	Gasket 12	4	易损件 EWP
4	A50900-1001501A	左支架	Left bracket	1	
5	A50900-1001601A	右支架	Right bracket	1	
6	Q150B1255TF2	螺栓 M12×55	Bolt M12×55	2	
7	Q40314	垫圈 14	Gasket 14	4	易损件 EWP
8	Q40114	垫圈 14	Gasket 14	4	易损件 EWP
9	Q150B1440	螺栓 M12×55	Bolt M12×55	4	

EWP=Easy wear part (易损件)

A510T8-1002000/气缸体总成 Cylinder Block Assembly





A510T8-1002000/气缸体总成 Cylinder Block Assembly

序号 NO.	图号 Part No.	名 称	Part Name	数量 Qty	备注 Remark
1	B8800-1002E02A	铰接螺栓 II	Swing Bolt II	1	
2	Q/YC901-3C10	垫圈 10	Washer 10	2	
3	B8800-1002E40	齿轮室润滑油管焊接件	Gear oil pipe weldment	1	
4	Q/YC901-3C08	垫圈 8	Washer 8	2	
5	B8800-1002E01A	铰接螺栓 I	Swing Bolt I	1	
6	D30-1002313	法兰面螺栓 M8X53.5	Flange bolts M8×53.5	3	
7	B8800-1002D03	液压泵惰齿轮压板	Hydraulic pump idle gear plate	1	
8	B8800-1002D02A	液压泵惰齿轮轴	Hydraulic pump idler gear shaft	1	
9	B8800-1002D40A	液压泵惰齿轮组件	Hydraulic pump Idle gear components	1	
10	D30-1002120	凸轮轴衬套	Camshaft bush	5	
11	Q61901	螺塞 NPT 1/8	Plug NPT 1/8	1	
12	YC7-40	碗形塞片 40	Bowl-type plug 40	2	
13	6105QA-1003088	气缸盖定位销套	Cylinder head positioning pin set	2	
14	YC7-22	碗形塞片 22	Bowl-type plug 22	1	
15	B0100-1002104	铝堵	Aluminum plug	3	
16	A9W00-1002114E	气缸体	Cylinder block	1	
17	A9W00-1002106C	气缸套	Cylinder liner	4	
18	A3000-1002063	气缸套封水圈	Cylinder liner hydrosphere	4	

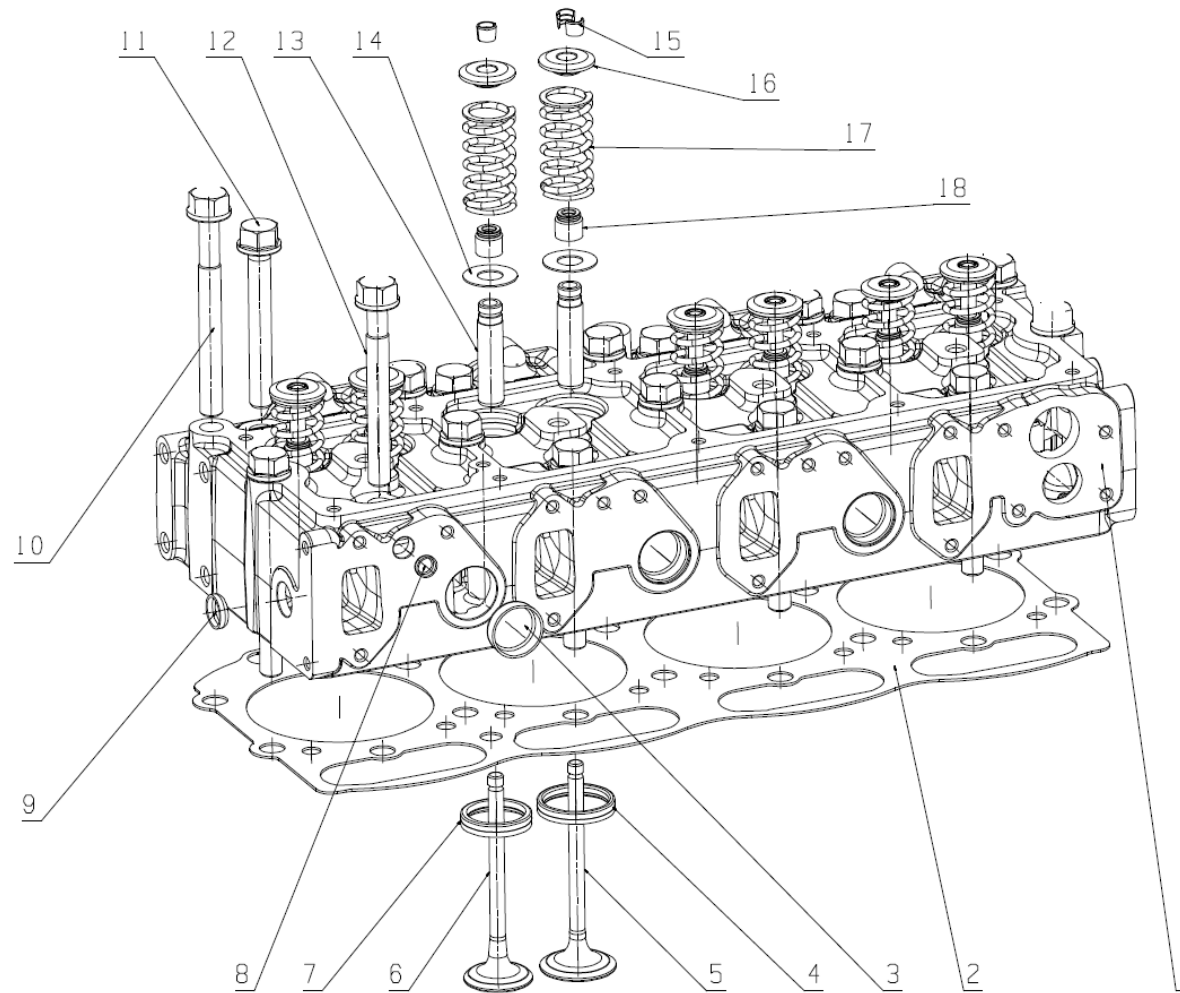
19	A3000-1002063B	气缸套封水圈	Cylinder liner hydrosphere	4	
20	YC7-30	碗形塞片 30	Bowl-type plug 30	2	
21	YC7-35	碗形塞片 35	Bowl-type plug 35	5	
22	6105Q-1002110	主油道密封塞	The main oil sealing plug	4	
23	330-1002021B	主轴承盖螺栓	The main bearing cover shorts bolt	10	
24	BYA00-1002740	喷嘴组件	Nozzle body	4	
25	430-1002163	垫圈	Washer	4	
26	BYA00-1002701	过油螺栓	Oil hollow bolt	4	
27	A50900-1002013	中间主轴承盖	Middle main bearing cover	1	
28	330-1002014	主轴承盖	The main bearing cover	3	
29	DK300-1002110A	主油道密封塞	Main oil gallery closing plug	1	
30	D30-1002012A	前主轴承盖	Front main bearing cap	1	
31	A8300-1002105	碗形塞片	Bowl type plug	1	
32	B0100-1002121	定位套	Locating sleeve	1	
33	YC24-B1222	销 12X22	Pin 12×22	1	
34	A50000-1002360A	惰齿轮组件	Idler gear assembly	1	
35	D30-1002052	惰齿轮轴	idle gear shaft	1	
36	D30-1002054	惰齿轮挡板	Idle gear damper	1	
37	D30-1002313	法兰面螺栓 M8X53.5	Flange bolts M8×53.5	3	
38	A7GA3-1002450B	张紧皮带轮组件	Belt tensioner	1	
39	Q1840825	螺栓 M8X25	Bolt M8×25	3	
40	Q40310	垫圈 10	Washer 10	1	

41	186-1002056A	调节螺栓	Ajusting bolt	1	
42	Q40110	垫圈 10	Washer 10	1	
43	AV700-1002464	惰轮支架	idler bracket	1	
44	AV700-1002206	喷油泵齿轮盖垫片	Injection pump gear cover plate gasket	1	易损件 EWP
45	Q1841045	螺栓 M10X45	Bolt M10×45	3	
46	A50900-1002203A	齿轮室盖	Gear chamber cover	1	
47	Q1840845	螺栓 M8X45	Bolt M8×45	1	
48	Q1840875	螺栓 M8X75	Bolt M8×75	4	
49	AV700-1002204A	齿轮室盖板垫片	Gear chamber cover plate gasket	1	易损件 EWP
50	A50900-1002201SF3	齿轮室	Gear house	1	
51	D8000-3509009	空压机垫片	Air compressor gasket	1	易损件 EWP
52	D7100-1002211	空压机接口盖板	Air compressor interface cover plate	1	
53	Q40110	垫圈 10	Washer 10	4	
54	Q40310	垫圈 10	Washer 10	4	
55	Q340B10	螺母 M10	Nut M10	1	
56	D8400-100220AB	双头螺柱	Threaded stud	1	
57	Q150B1030	螺栓 M10X30	Bolt M10×30	3	
58	Q1840835	螺栓 M8X35	Bolt M8×35	4	
59	AVJ01-3407013	转向泵盖	Steering pump cover	2	
60	AV500-1002225A	液压泵垫片	Hydraulic pump gasket	4	2 件做随机 备件易损件 EWP
61	Q218B0612	螺钉 M6X12	Bolt M6×12	1	

62	A50900-1002233	液压泵齿轮轴	Hydraulic pump gear shaft	1	
63	YC208-C06700F	O 形圈 3.55X67	O ring 3.55×67	1	易损件 EWP
64	YC24-B0816	圆柱销 8X16	Round pin 8×16	2	
65	Q1840822	螺栓 M8X22	Bolt M8×22	8	
66	BY6T2-1002260	液压泵齿轮组件	Hydraulic pump gear assembly	1	
67	A8ST4-1002262	液压泵传动花键	Hydraulic pump drive spline	1	
68	B8800-1002264	垫块	Washer	1	
69	Q43130	挡圈 30	Retaining ring 25	1	
70	B8800-1002263	液压泵齿轮压板	Hydraulic pump gear pressing plate	1	
71	Q1840850TF2	螺栓 M8X50	Bolt M8×50	2	
72	Q1840885	螺栓 M8X85	Bolt M8×85	1	
73	YC209-C090110PR	油封 90X110	Seal 90X110	1	
74	Q1840890	螺栓 M8X90	Bolt M8×90	3	
75	Q1840865	螺栓 M8X65	Bolt M8×65	10	
76	Q1840820	螺栓 M8X20	Bolt M8×20	4	
77	AV700-1002205	喷油泵齿轮盖	Injection pump gear cover plate	1	
78	150-1003040F	加机油口盖组件	Oil filler hole cover subassembl	1	

EWP=Easy wear part (易损件)

A50000-1003000/气缸盖总成 Cylinder Head Assembly

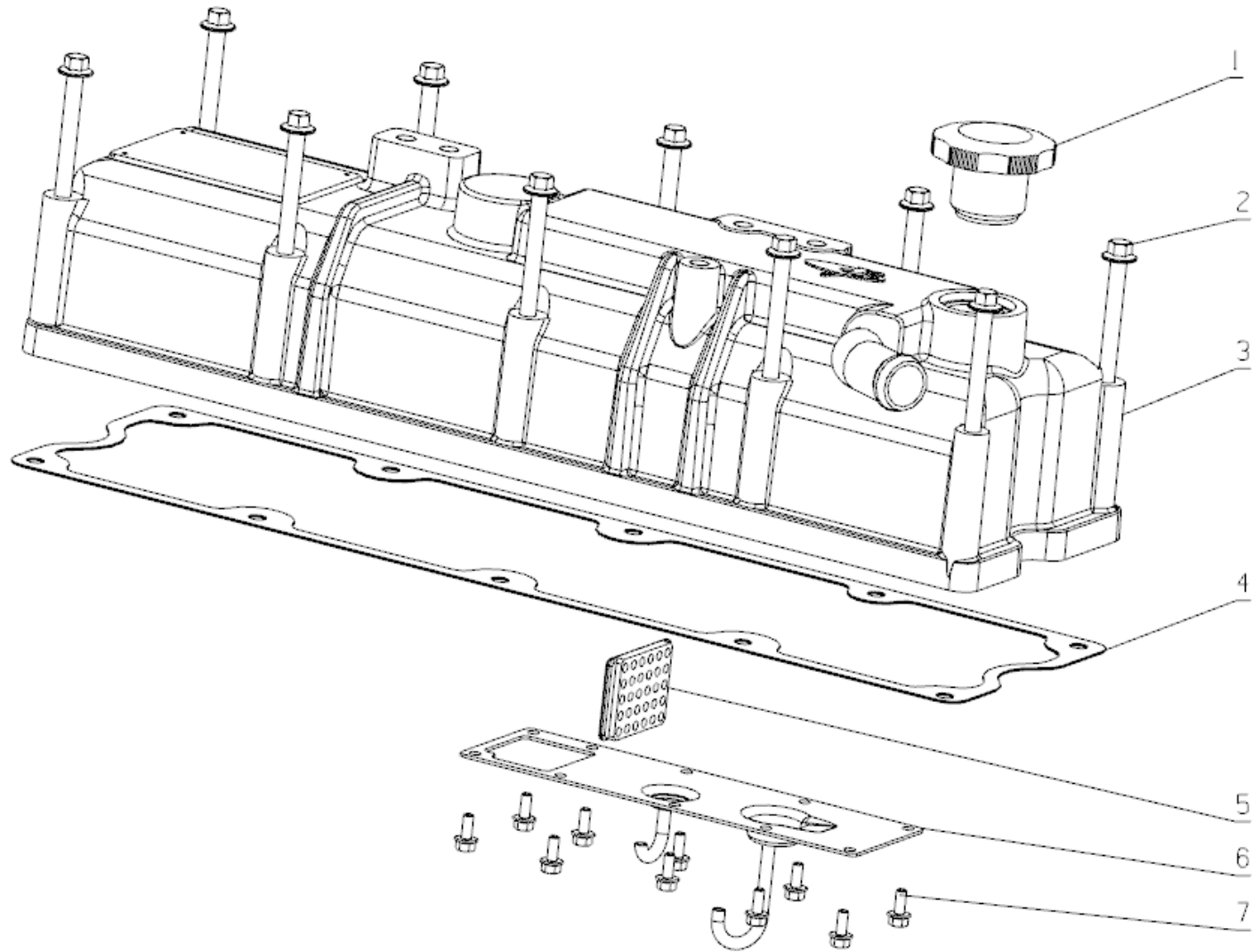


A50000-1003000/气缸盖总成 Cylinder Head Assembly

序号 NO.	图号 Part No.	名 称	Part Name	数量 Qty	备注 Remark
1	A50000-1003171C	气缸盖	Cylinder head	1	
2	A60A00-1003001-C64	气缸盖垫片	Cylinder head gasket	1	易损件 EWP
3	YC7-35	碗形塞片 35	Bowl-type plug 35	7	
4	D30-1003173A	进气门座圈	Air intake seat ring	4	易损件 EWP
5	D30-1003111B	进气门	Air intake valve	4	易损件 EWP
6	D30-1003103C	排气门	Air exhaust valve	4	易损件 EWP
7	D30-1003174A	排气门座圈	Air exhaust seat ring	4	易损件 EWP
8	YC7-14	碗形塞片 14	Bowl-type plug 14	1	
9	YC7-22	碗形塞片 22	Bowl-type plug 22	1	
10	J2000-1003014	气缸盖短螺栓II	Cylinder head short bolt	10	易损件 EWP
11	D30-1003018B	气缸盖短螺栓III	Cylinder head short bolt	4	易损件 EWP
12	J2000-1003018	气缸盖短螺栓III	Cylinder head short bolt	4	易损件 EWP
13	M2A00-1003172	气门导管	Valve guide	8	易损件 EWP
14	D30-1003161	气门弹簧下座	Valve spring seat	8	
15	150-1007021E	气门锁夹	Valve lock key	16	易损件 EWP
16	D30-1003116	气门弹簧上座	Valve spring seat	8	易损件 EWP
17	D30-1003118	排气门弹簧	Valve spring	8	易损件 EWP
18	M6600-1003105	气门杆油封	Valve stem seal	8	易损件 EWP

EWP=Easy wear part (易损件)

A51EY0-A003000/气缸盖罩总成 Cylinder Head Cover Assembly

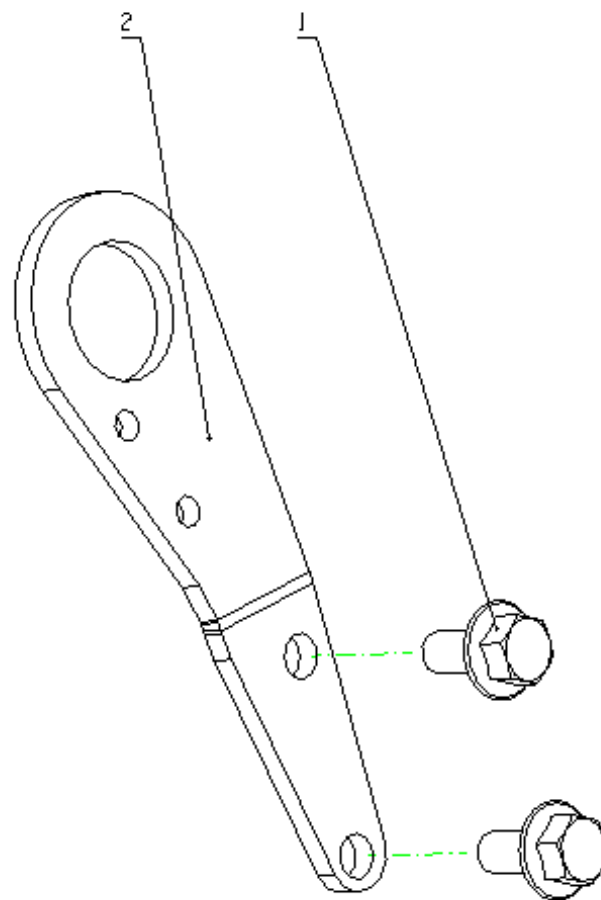


A51EY0-A003000/气缸盖罩总成 Cylinder Head Cover Assembly

序号 NO.	图号 Part No.	名 称	Part Name	数量 Qty	备注 Remark
1	150-1003040F	加机油口盖组件	Oil filler cover	1	
2	Q1840890	螺栓 M8X90	Bolt M8X90	10	
3	A500Y0-1003205	气缸盖罩	Cylinder Head Cover	1	
4	D7500-1003201A	气缸盖罩垫片	Cylinder head cover gasket	1	易损件 EWP
5	A9W00-1003273	挡板	dam-board	1	
6	A9W00-1003270	盖板组件	Cover board subassembly	1	
7	Q1840512	螺栓 M5X12	Bolt M5X12	10	

EWP=Easy wear part (易损件)

AYK000-A004000/吊耳总成 Hanger Assembly

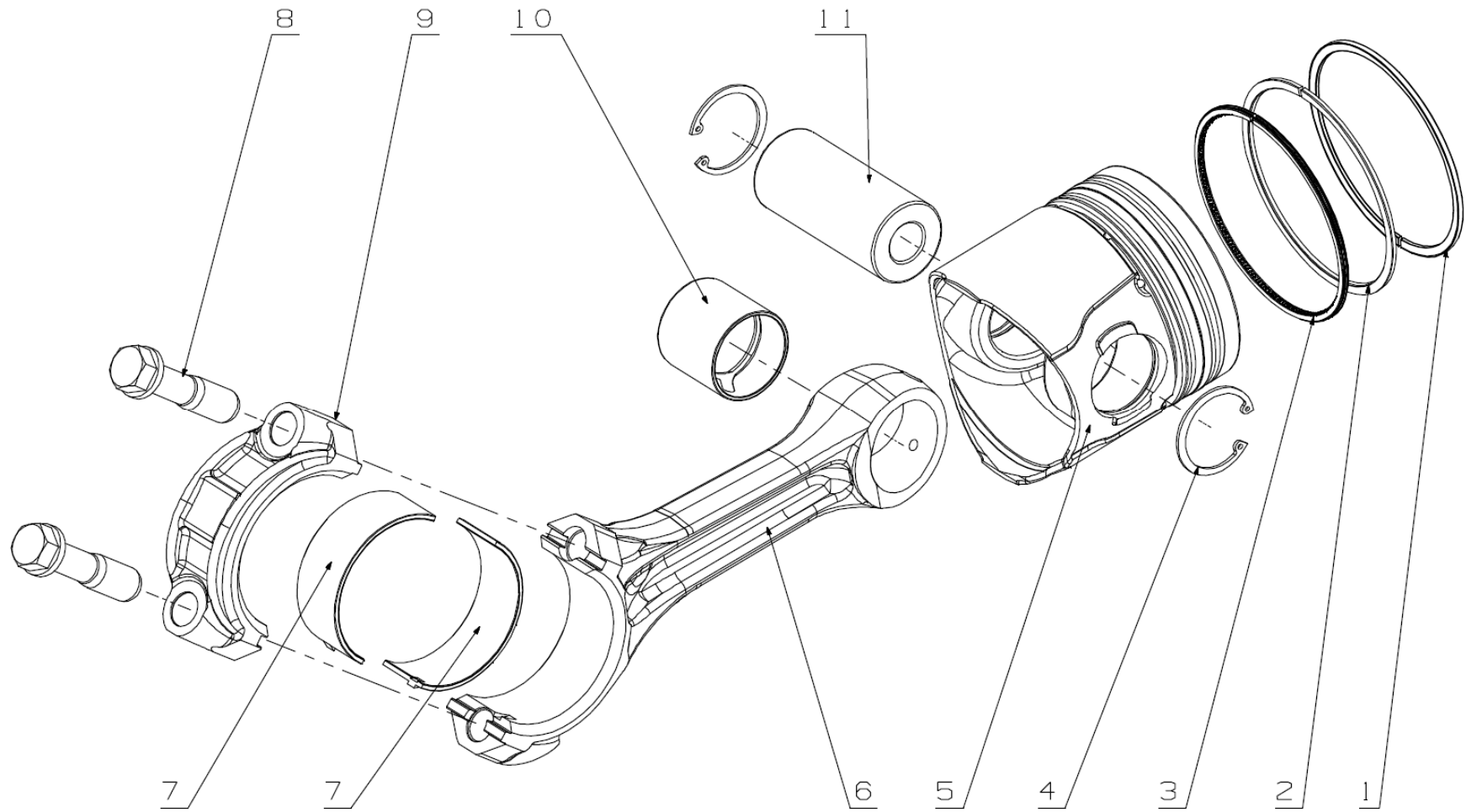


AYK000-A004000/吊耳总成 Hanger Assembly

序号 No.	图号 Part No.	名 称	Part Name	数量 Qty	备注 Remark
1	Q1841225TF2	螺栓 M12×25	Bolt M12×25	2	
2	A9W00-1003123	后吊耳	Rear lifting lug	1	

EWP=Easy wear part (易损件)

A50000-1004000/活塞及连杆总成 Piston and connecting rod assembly

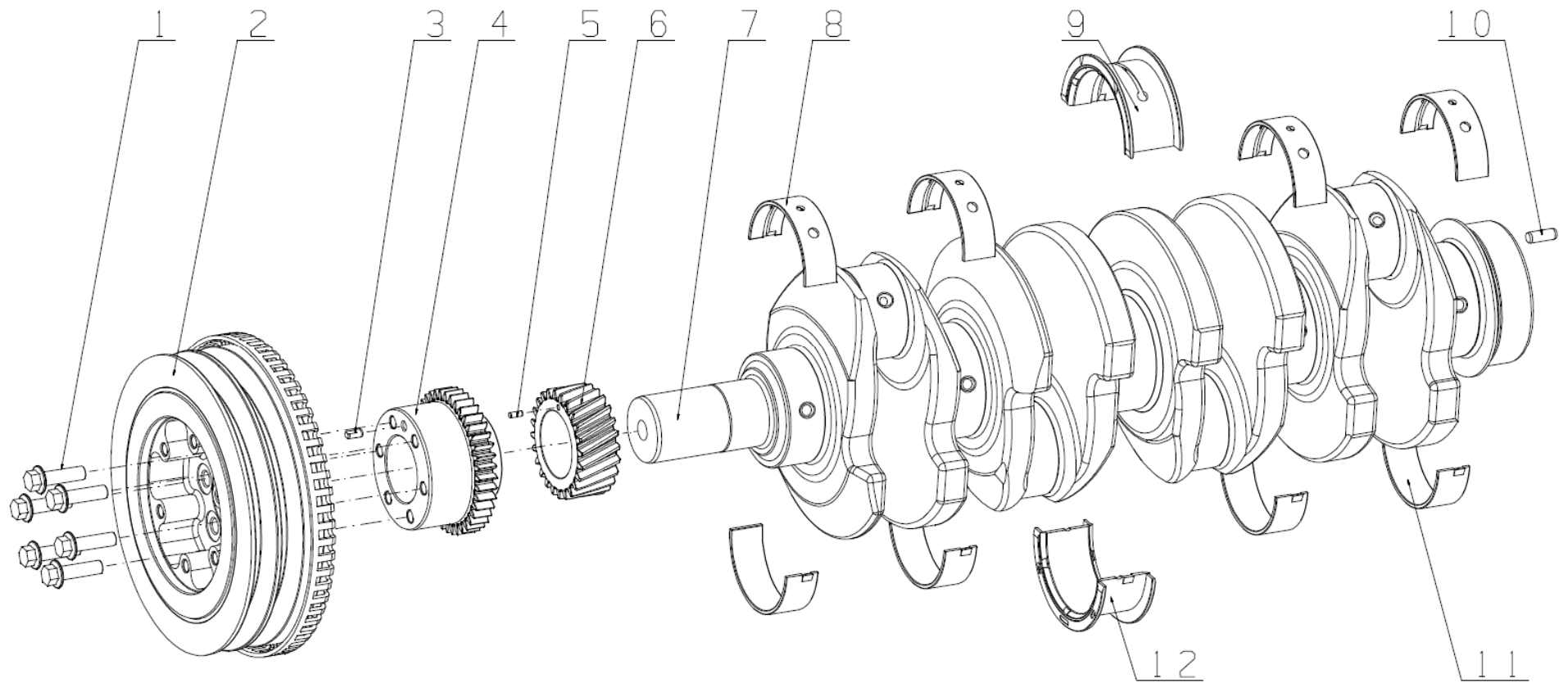


A50000-1004000/活塞及连杆总成 Piston and connecting rod assembly

序号 NO.	图号 Part No.	名 称	Part Name	数量 Qty	备注 Remark
1	A6000-1004002A	气环	compression ring	1	易损件 EWP
2	A6000-1004003A	刮油环	Oil ring	1	易损件 EWP
3	A6000-1004100A	油环部件	Oil ring	1	易损件 EWP
4	Q43040	挡圈 40	Retaining ring 40	2	
5	A50000-1004001	活塞	Piston	1	
6	A8300-1004201A	连杆体	Connecting rod body	1	
7	A8600-1004005	连杆轴瓦	Lower connecting rod bearing bush	1	易损件 EWP
8	6105Q-1004054	连杆螺栓	Connecting rod bolt	2	
9	A8300-1004203	连杆盖	Connecting rod cover	1	易损件 EWP
10	A3000-1004202	连杆衬套	Connecting rod bushing	1	
11	430-1004019	活塞销	Piston pin	1	

EWP=Easy wear part (易损件)

A50900-1005000 / 曲轴减振器总成 Crankshaft Vibration Damper Assembly

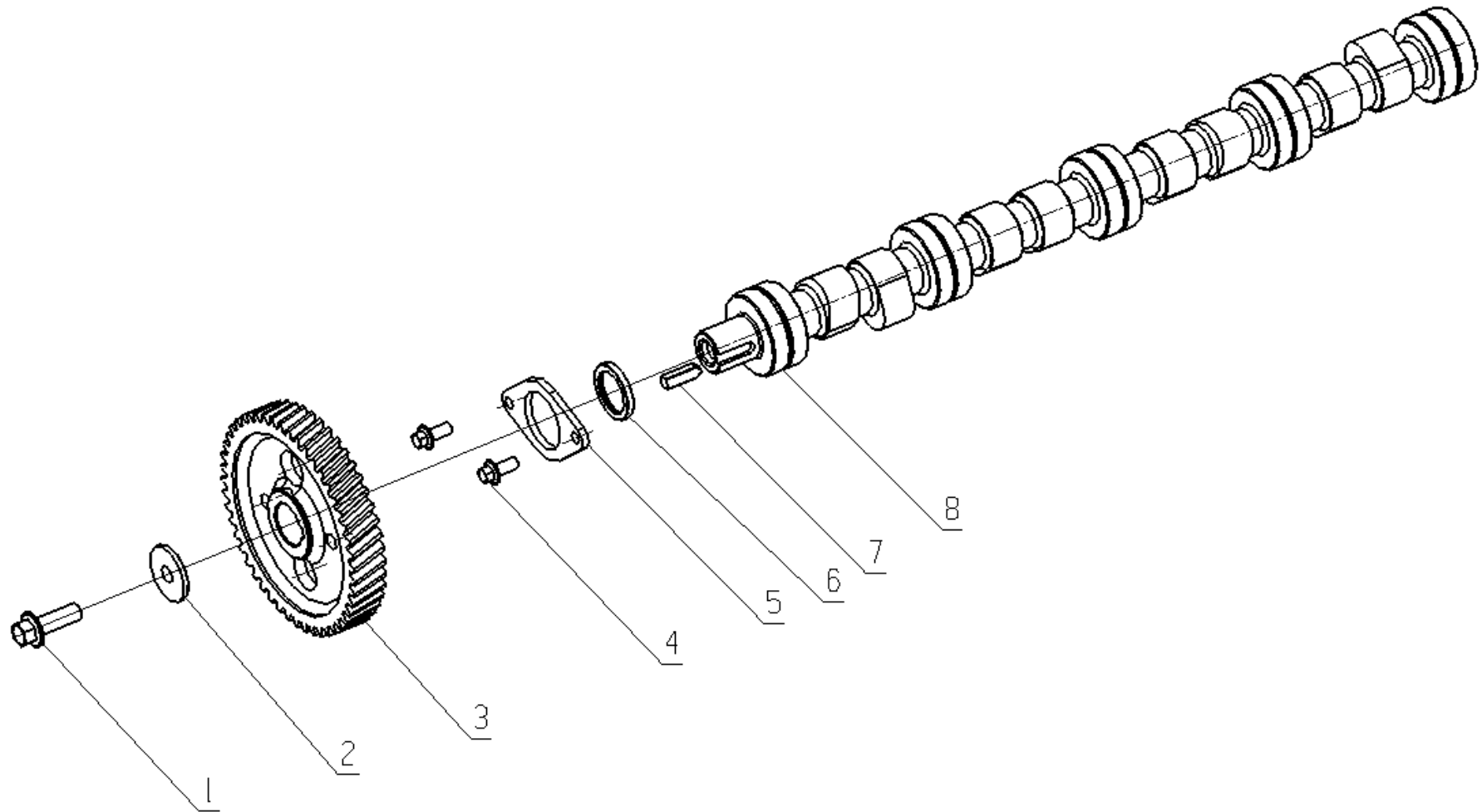


A50900-1005000 / 曲轴减振器总成 Crankshaft Vibration Damper Assembly

序号 NO.	图号 Part No.	名 称	Part Name	数量 Qty	备注 Remark
1	Q1841035TF2	螺栓 M10×35	Bolt M10×35	6	
2	A50000-1005140B	前减振器组件	Front shock absorber assembly	1	
3	A3100-1005018	扁销	Flat pin	1	
4	AYK00-1005018A	机油泵驱动齿轮	Oil pump drive gear	1	
5	YC24-B0410	圆柱销 4×10	Pin 4×10	1	
6	A9L00-1005002B	曲轴正时齿轮	Crankshaft timing gear	1	
7	AYK00-1005001	曲轴	Crankshaft		
8	D30-1005054	上主轴瓦	Upper Main bearing	4	易损件 EWP
9	D2000-1005003SF2	曲轴上止推轴瓦	Upper Main bearing Crankshaft thrust	1	易损件 EWP
10	YC24-B0822	圆柱销 8×22	Pin 8×22	1	
11	D30-1005055	下主轴瓦	Lower Main bearing	4	易损件 EWP
12	D2000-1005004SF3	曲轴下止推轴瓦	Lower Main bearing Crankshaft thrust	1	易损件 EWP

EWP=Easy wear part (易损件)

A8600-1006000/凸轮轴总成 Camshaft Assembly

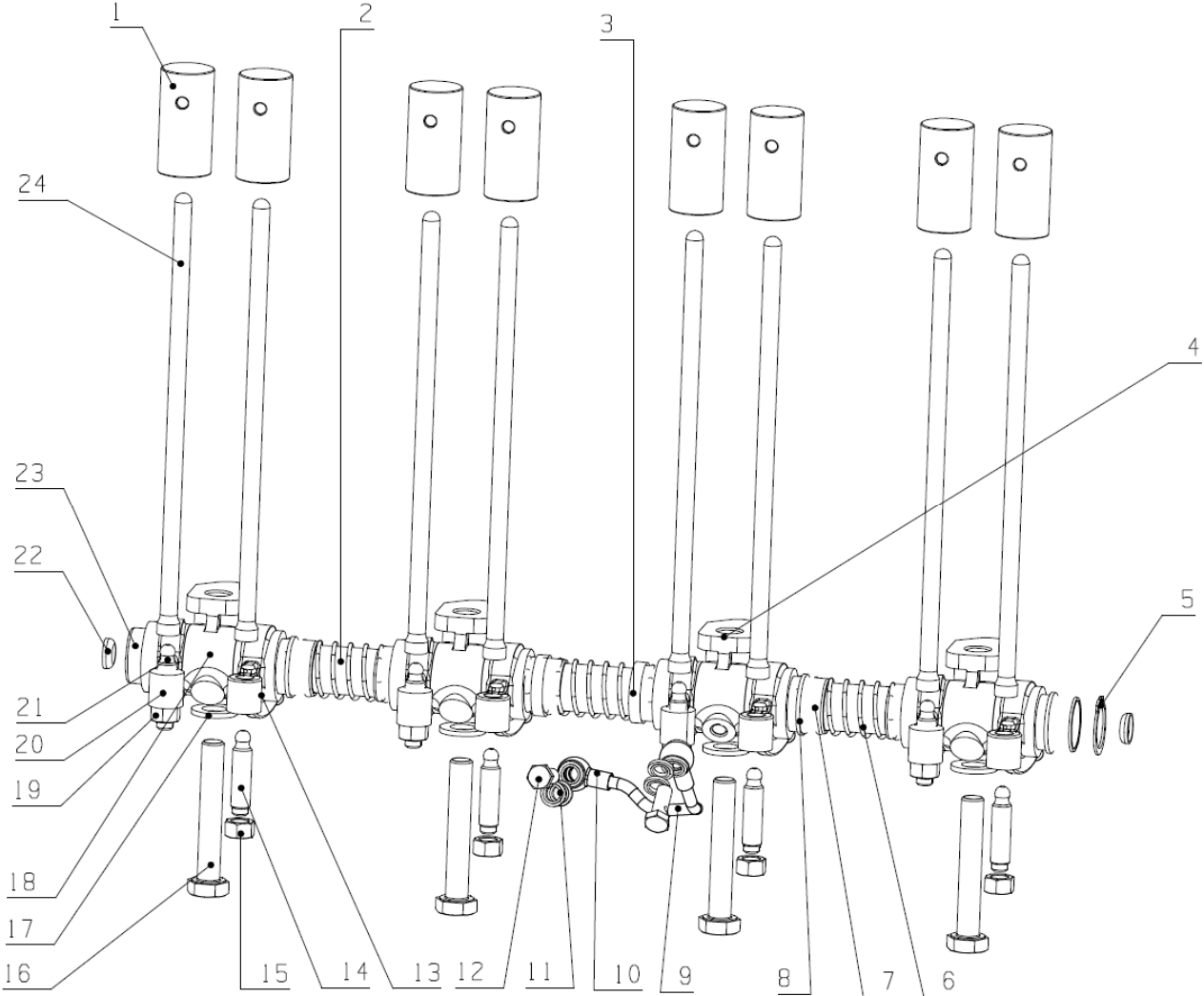


A8600-1006000/凸轮轴总成 Camshaft Assembly

序号 NO.	图号 Part No.	名 称	Part Name	数量 Qty	备注 Remark
1	Q1841235TF2	螺栓 M12×35	Bolt M12×35	1	
2	630-1006019	垫圈	Washer	1	易损件 EWP
3	D30-1006021	凸轮轴正时齿轮	Camshaft timing gear	1	
4	Q/YC1820818TF2	螺栓 M8×18	Bolt M8×18	2	
5	D30-1006016	凸轮轴止推片	Camshaft thrust plate	1	易损件 EWP
6	6105Q-1006005	隔圈	Space ring	1	易损件 EWP
7	GB/T1096-C0828	键 C8X28	Key C8×28	1	易损件 EWP
8	D30-1006001	凸轮轴	Camshaft	1	易损件 EWP

EWP=Easy wear part (易损件)

B8800-1007000/配气机构总成 Valve Train System Assembly



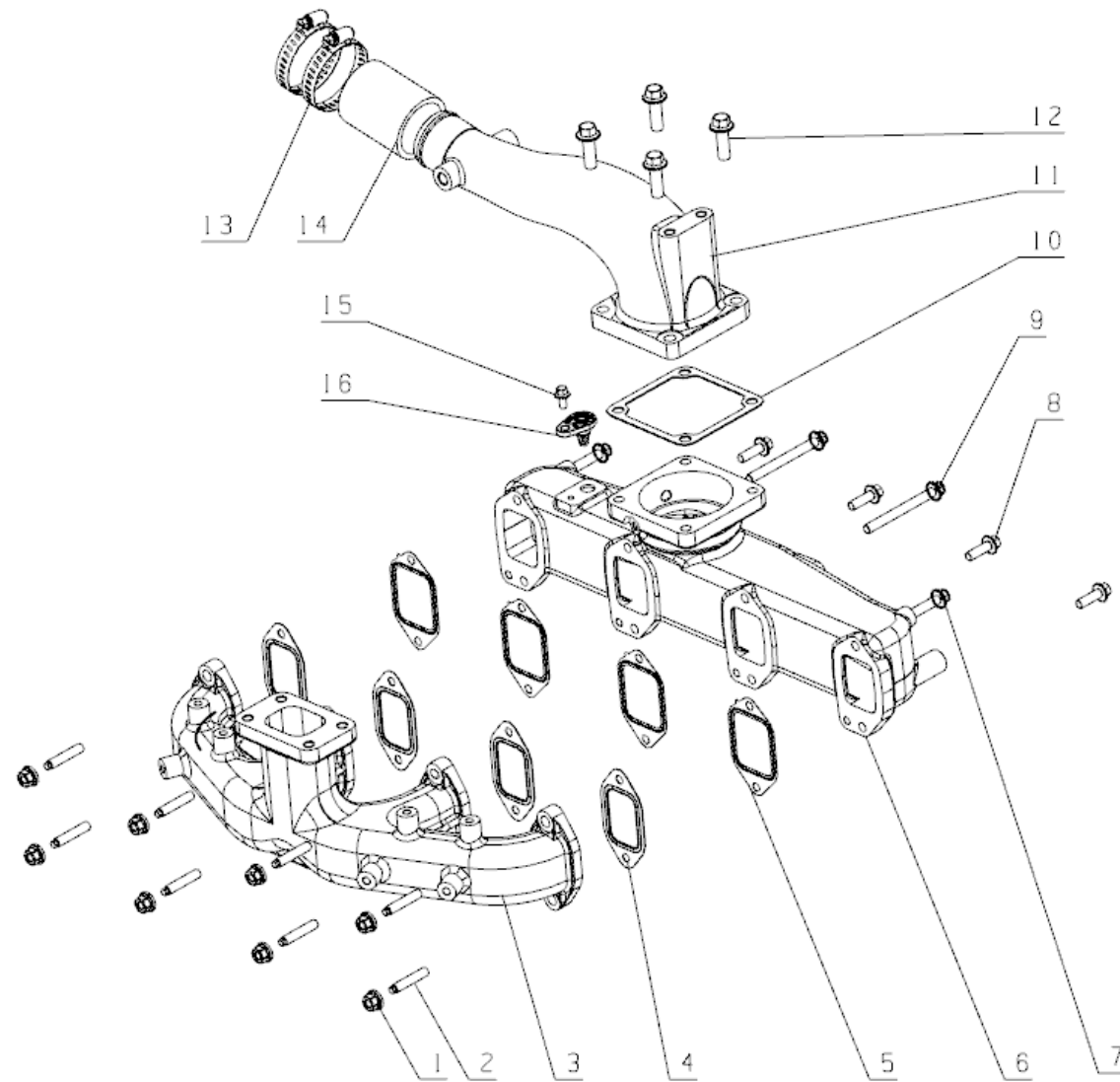
B8800-1007000/配气机构总成 Valve Train System Assembly

序号 NO.	图号 Part No.	名 称	Part Name	数量 Qty	备注 Remark
1	6105Q-1007091A	挺杆	Tappet	8	易损件 EWP
2	D30-1007101	摇臂轴	Rocker shaft	1	
3	D30-1007031	摇臂轴垫圈	Rocker shaft washer	2	
4	D30-1007034	摇臂轴座（一）	Rocker shaft supporting seat（一）	1	易损件 EWP
5	Q43125	挡圈 25	Retaining ring25	2	
6	6105QA-1007032	气门摇臂轴弹簧	Rocker shaft spring	3	
7	AYJ400-1007144	进气门摇臂衬套	Inlet valve rocker arm bushing	4	
8	6105QA-1007031	摇臂轴垫圈	Rocker shaft washer	6	
9	D30-1007071A	通油管	Oil pipe	1	
10	6105Q-1007072	油管接头	The tubing connector	2	
11	Q/YC149-8	复合式密封垫圈 8	Compound sealing washer 8	4	
12	6105Q-1007073	接头螺栓	Joint bolt	2	
13	J3100-1007153A	排气门摇臂	Exhaust rocker	4	
14	6105QA-1007053	气门调整螺钉	Valve adjusting screw	1	
15	6105Q-1007054	锁紧螺母	locknut	1	
16	D30-1007036	六角头螺栓	Hexagon bolt	4	
17	A30-1007092	垫圈	Washer	4	
18	D30-1007033	摇臂轴座（二）	Rocker shaft supporting seat（二）	3	易损件 EWP
19	6105Q-1007054	锁紧螺母	locknut	1	
20	J3100-1007143A	进气门摇臂	Intake rocker	4	

21	6105QA-1007053	气门调整螺钉	Valve adjusting screw	1	
22	6105QA-1007042	碗形塞片	Push in cap	2	
23	AYJ400-1007144	进气门摇臂衬套	Inlet valve rocker arm bushing	4	
24	6105QA-1007081B	推杆	Push rod	8	易损件 EWP

EWP=Easy wear part (易损件)

A51000-1008000/进排气管总成 Intake And Exhaust Manifold Parts Assembly

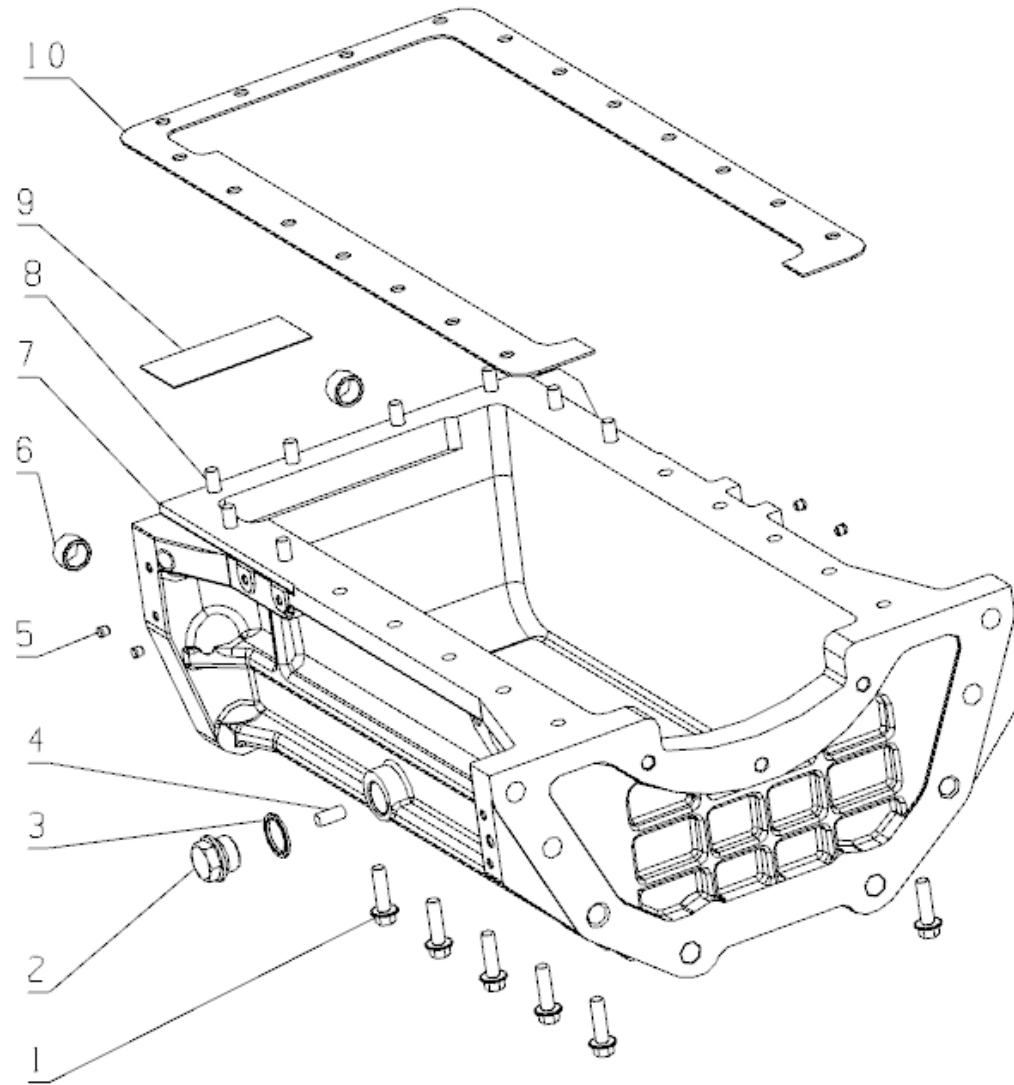


A51000-1008000/进排气管总成 Intake And Exhaust Manifold Parts Assembly

序号 NO.	图号 Part No.	名 称	Part Name	数量 Qty	备注 Remark
1	D0200-1008206A	螺母	Nut	8	
2	D0200-1008207A	双头螺柱	Threaded stud	8	
3	A50900-1008204	排气管	Intake manifold	1	
4	D2000-1008250B	排气管垫片组件	Exhaust manifold gasket parts	4	
5	D73K0-1008104A	进气管垫片	Air intake manifold spacer	4	易损件 EWP
6	A50000-1008101B	进气管	Intake manifold	1	
7	Q1840875TF2	螺栓 M8×75	Bolt M8×75	2	
8	Q1840825TF2	螺栓 M8×25	Bolt M8×25	4	
9	Q1840880TF2	螺栓 M8×80	Bolt M8×80	2	
10	JA500-1008105	进气接管垫片	Intake pipe gasket	1	易损件 EWP
11	A51000-1008102A	进气接管	Air intake pipe	1	
12	Q1841030	螺栓 M10×30	Bolt M10×30	4	
13	Q67664	环箍 64	Loop hoop 64	2	
14	G2R00-1118610	压气机出口胶管	Discharge hose	1	
15	Q1840612	螺栓 M6×12	Bolt M6×12	1	
16	G2200-1008124	盖板	Cover	1	

EWP=Easy wear part (易损件)

AVJ00-1009000/油底壳总成 Oil Sump Assembly

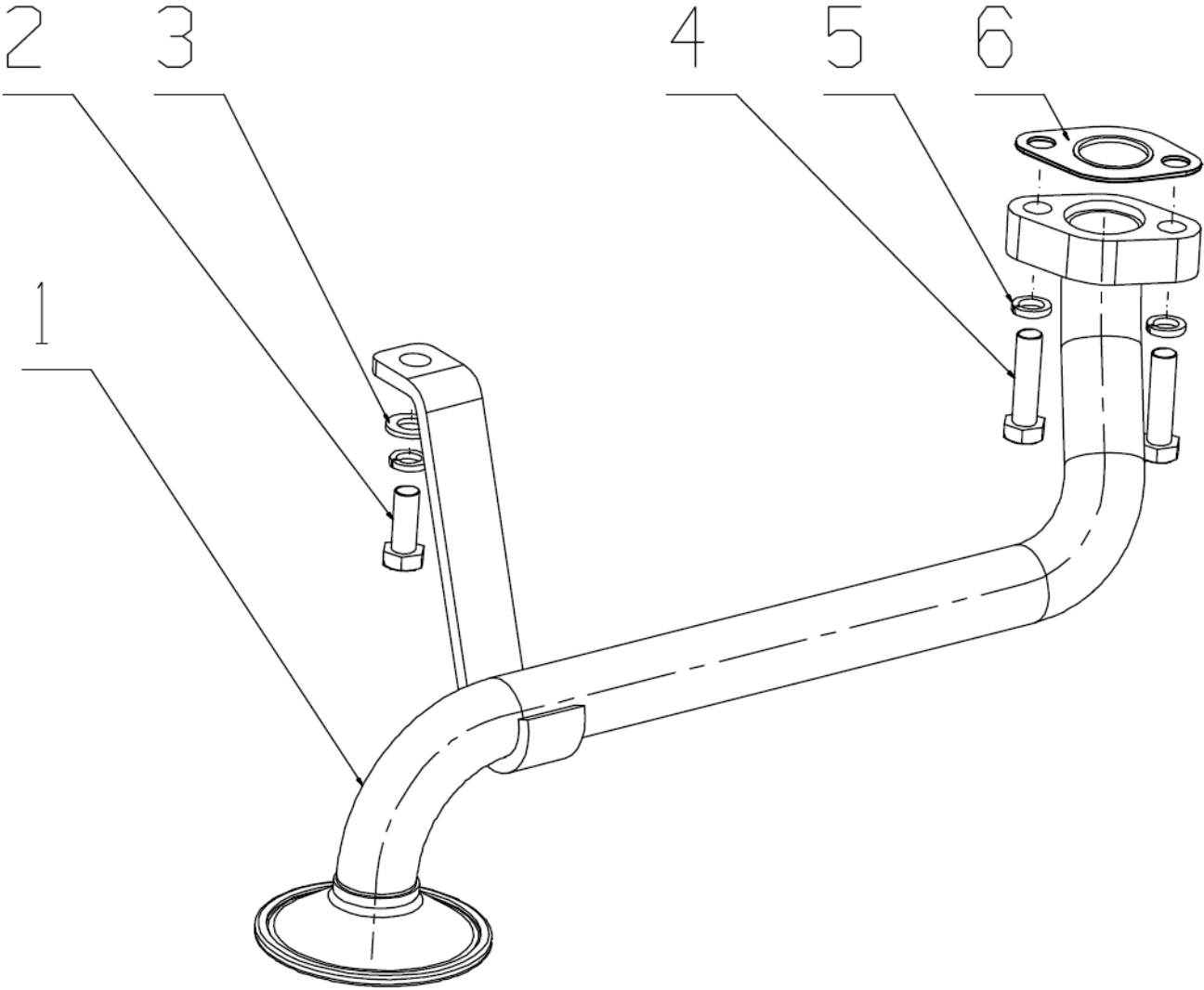


AVJ00-1009000/油底壳总成 Oil Sump Assembly

序号 NO.	图号 Part No.	名 称	Part Name	数量 Qty	备注 Remark
1	Q1841035TF2	螺栓 M10×35	Bolt M10×35	10	
2	6105Q-1009031C	放油塞	Oil drain plug	1	
3	Q/YC149-27	复合式密封垫圈 27	Compound Seal washer 20	1	易损件 EWP
4	6105Q-1009032A	放油塞磁铁	Drain plug magnet	1	
5	YC8-08072	塑料堵塞 M8	Plastic blockage M8	4	
6	B8803-1002121	定位套	Positioning sleeve	2	
7	AVJ00-1009006	油底壳	Oil sump subassembly	1	
8	Q1841050TF2	螺栓 M10×50	Bolt M10×50	8	
9	YC51-1301	加机油量标签	Oil label	1	
10	B8801-1009001	油底壳垫片	Oil sump gasket	1	易损件 EWP

EWP=Easy wear part (易损件)

AYK200-1010000/机油集滤器总成 Oil Strainer Assembly

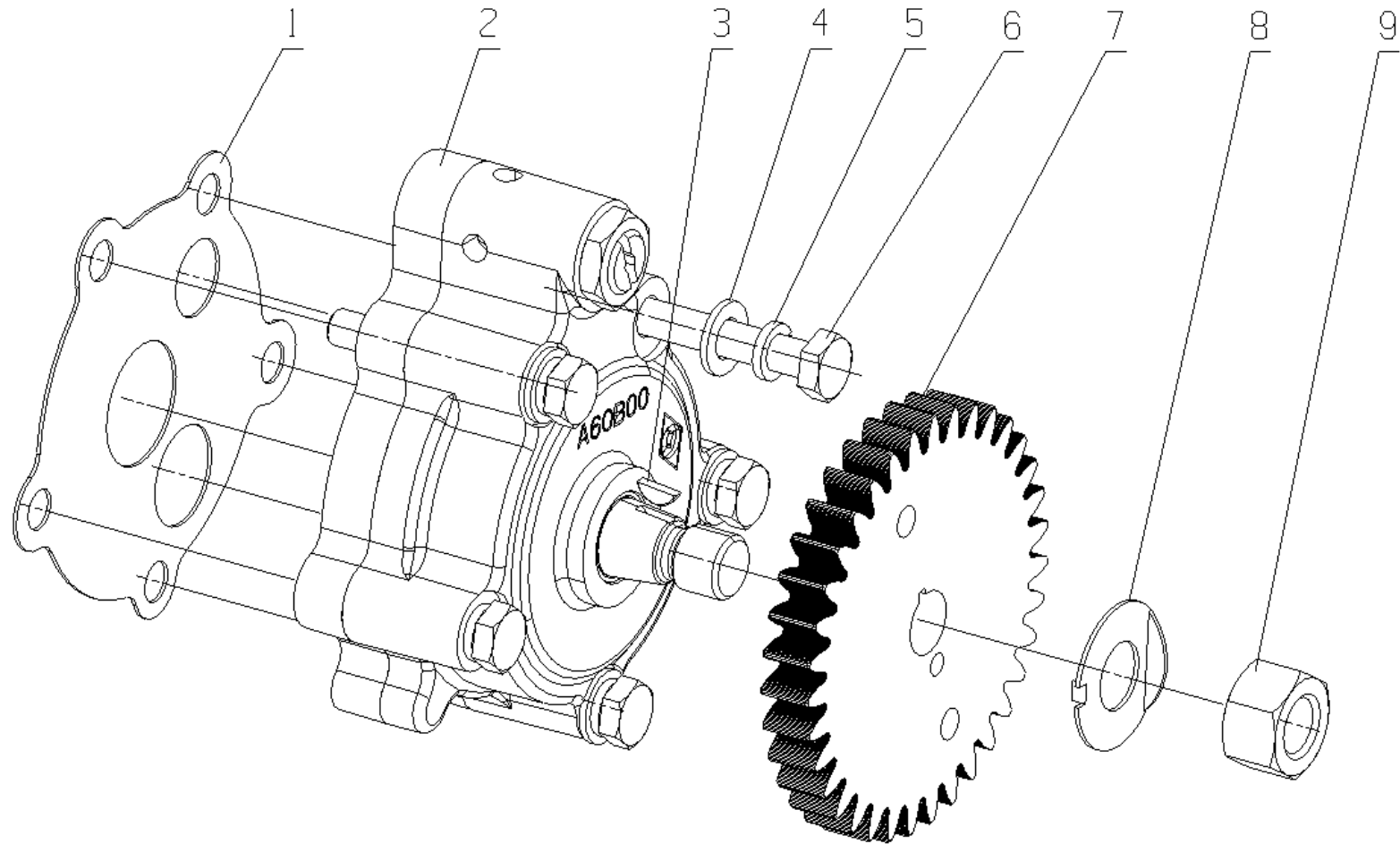


AYK200-1010000/机油集滤器总成 Oil Strainer Assembly

序号 NO.	图号 Part No.	名 称	Part Name	数量 Qty	备注 Remark
1	AYK200-1010100	吸油管部件	Oil suction pipe part	1	
2	Q1840820TF2	螺栓 M8×20	Bolt M8×20	1	
3	Q40108	垫圈 8	Washer 8	1	易损件 EWP
4	Q/YC1820830TF2	螺栓 M8×30	Bolt M8×30	2	
5	Q40308	垫圈 8	Washer 8	3	易损件 EWP
6	D7505-1010150	垫片组件	Oil pump strainer gasket	1	易损件 EWP

EWP=Easy wear part (易损件)

A60B00-1011000/机油泵总成 Oil Pump Assembly

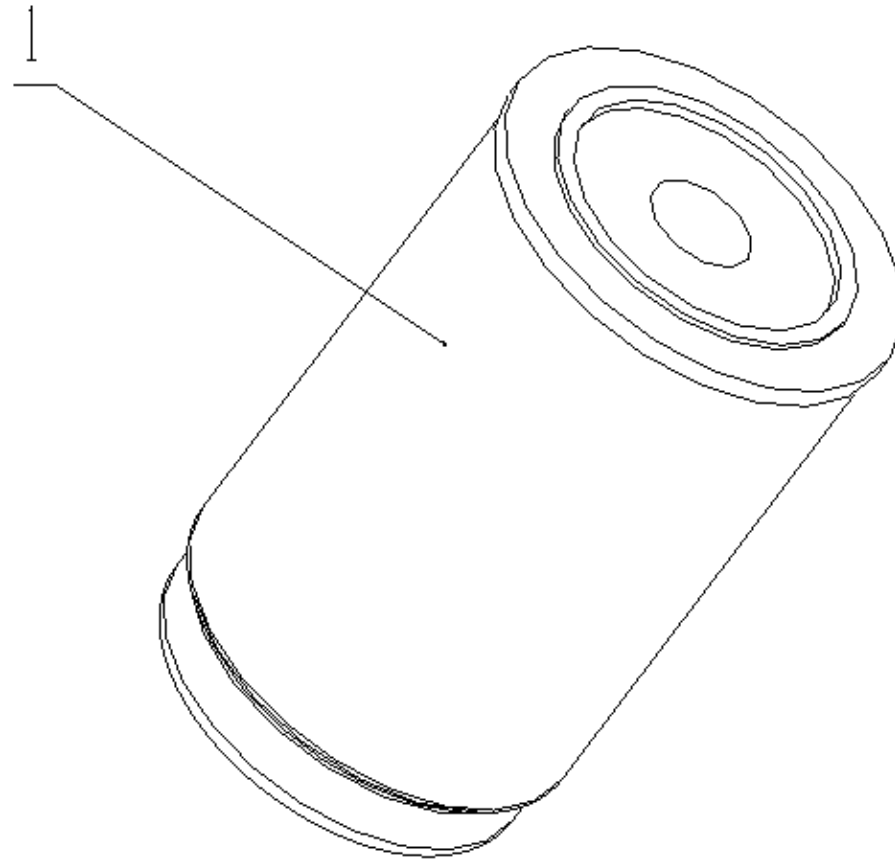


A60B00-1011000/机油泵总成 Oil Pump Assembly

序号 NO.	图号 Part No.	名 称	Part Name	数量 Qty	备注 Remark
1	B8800-1011007	机油泵垫片	Oil pump gasket	1	易损件 EWP
2	A60B00-1011100A	机油泵	Oil pump	1	
3	GB/T1099-2510	键 2.5×10	Key 2.5×10	1	
4	Q40108	垫圈 8	Washer 8	4	易损件 EWP
5	Q40308	垫圈 8	Washer 8	4	易损件 EWP
6	Q150B0855	螺栓 M8×55	Bolt M8×55	4	
7	AYK00-1011114	机油泵驱动齿轮	Oil pump drive gear	1	
8	GB/T856-14-300HV	外舌止动垫圈 14	Outer tongue stop washer	1	易损件 EWP
9	Q341B14	螺母 M14×1.5	Nut M14×1.5	1	

EWP=Easy wear part (易损件)

S52FB-1012000/机油滤清器总成 Oil Filter Part

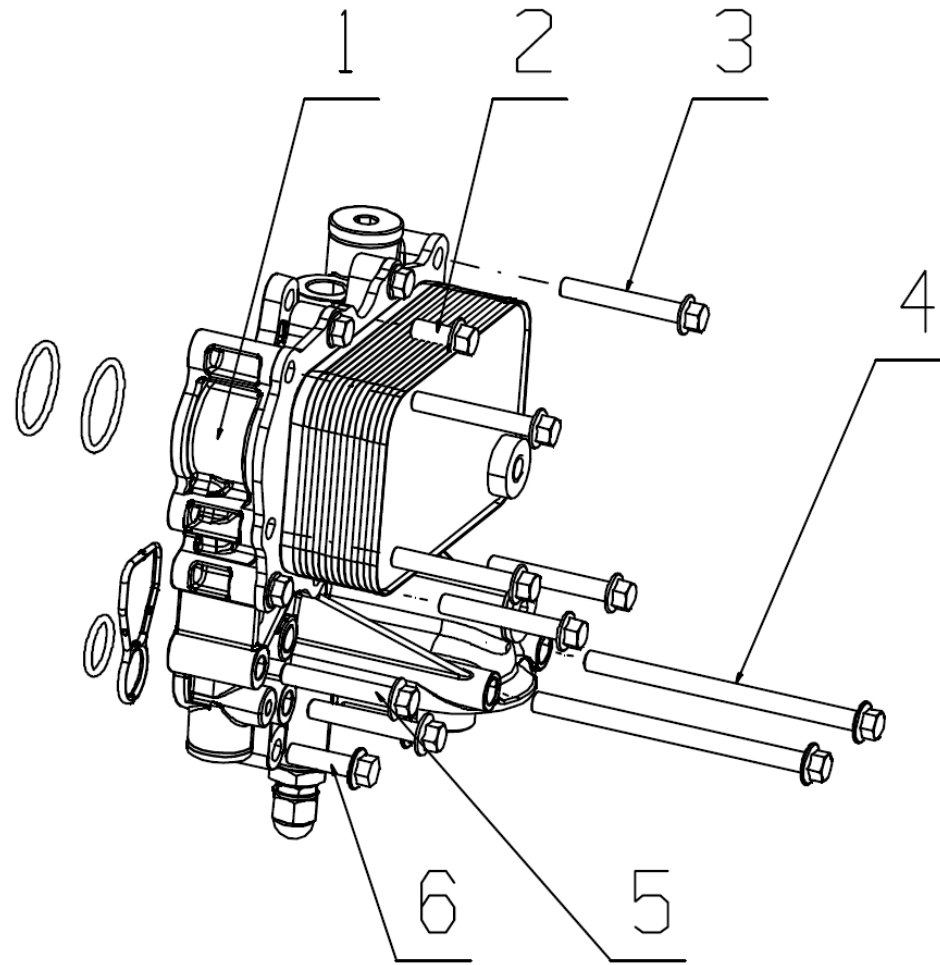


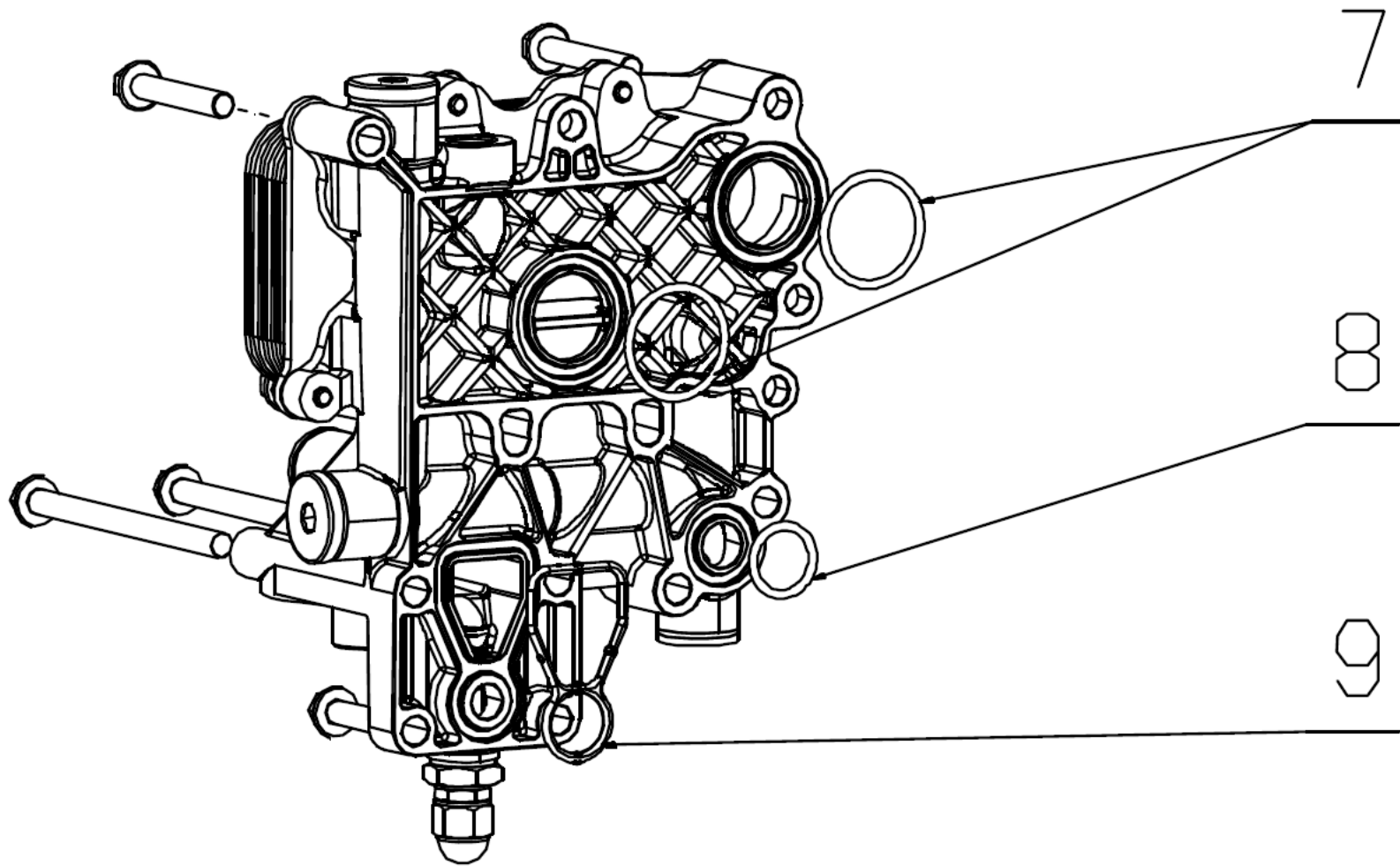
S52FB-1012000/机油滤清器总成 Oil Filter Part

序号 NO.	图号 Part No.	名 称	Part Name	数量 Qty	备注 Remark
1	186-1012240	机油滤清器	Oil filter	1	

EWP=Easy wear part (易损件)

A50000-1013000/机油冷却器总成 Oil Cooler Assembly



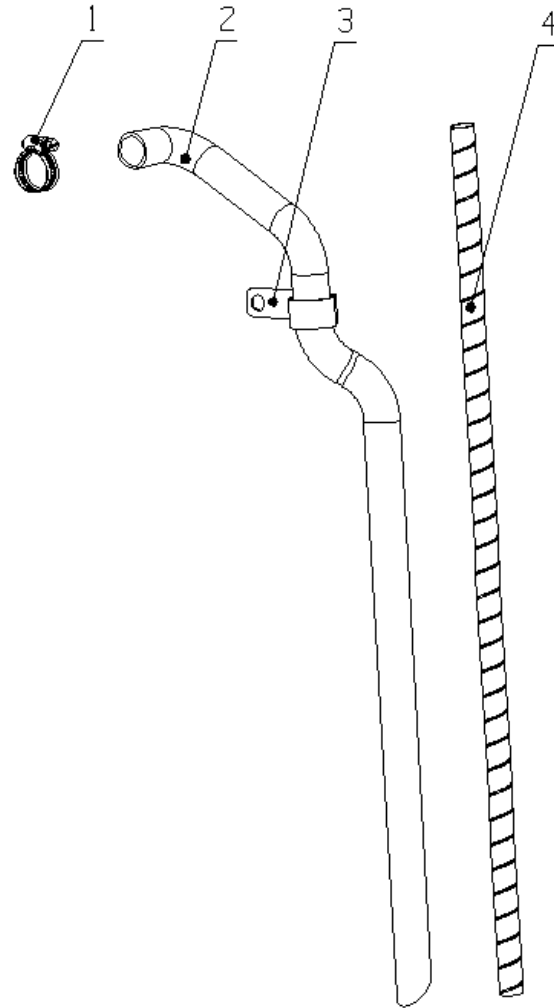


A50000-1013000/机油冷却器总成 Oil Cooler Assembly

序号 NO.	图号 Part No.	名 称	Part Name	数量 Qty	备注 Remark
1	A9W00-1013100D	冷却器	Cooler	1	
2	Q1841022TF2	螺栓 M10×22	Bolt M10×22	1	
3	Q1841065TF2	螺栓 M10×65	Bolt M10×65	5	
4	Q18410145	螺栓 M10×145	Bolt M10×145	2	
5	Q1841060TF2	螺栓 M10×60	Bolt M10×60	2	
6	Q1841035	螺栓 M10×35	Bolt M10×35	2	
7	YC208-C04000S	O 形圈 3.55×40	O ring 3.55×40	2	易损件 EWP
8	YC208-C02360F	O 形圈 3.55×23.6	O ring 3.55×23.6	1	易损件 EWP
9	A9W00-1013106	冷却器盖垫片	Cooler cover gasket	1	易损件 EWP

EWP=Easy wear part (易损件)

A51E00-1014000/曲轴箱通风装置总成 Crankcase ventilation installation assembly

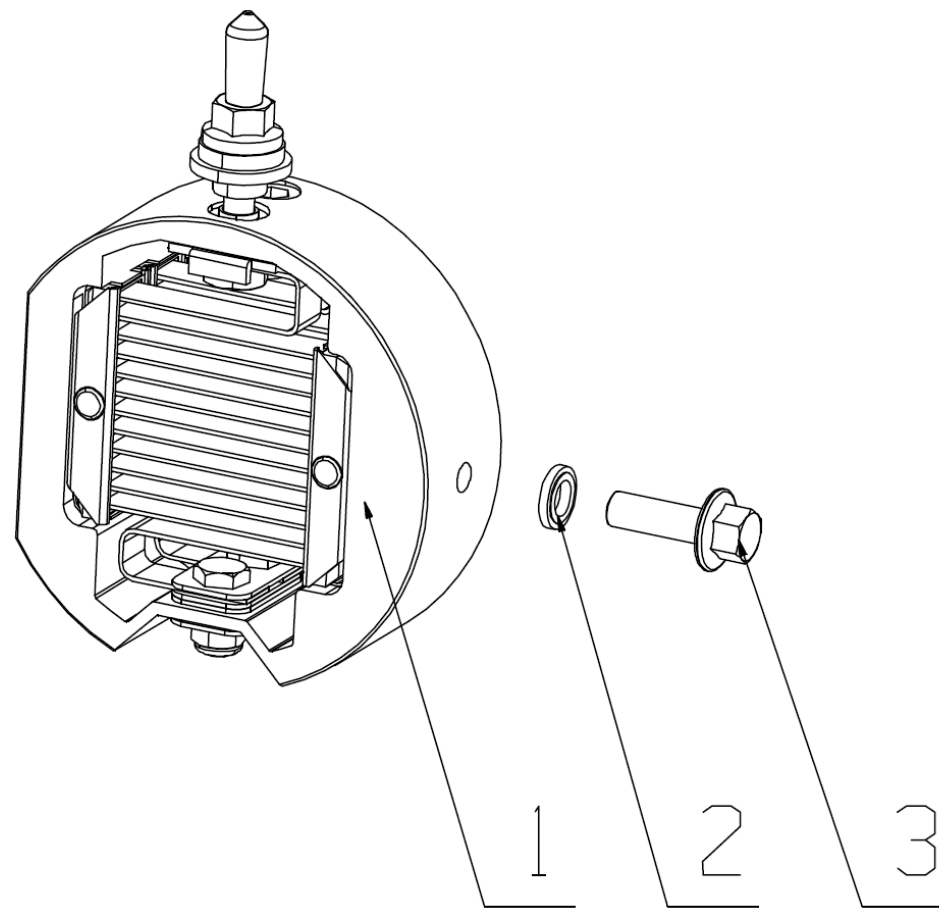


A51E00-1014000/曲轴箱通风装置总成 Crankcase ventilation installation assembly

序号 NO.	图号 Part No.	名 称	Part Name	数量 Qty	备注 Remark
1	YC49-30	环箍 30	Loop hoop 30	1	
2	A50000-1014045B	外通管	Outlet pipe	1	
3	A50000-1014001	通气管支架	Ventilation pipe bracket	1	
4	A10E3-1014055	胶套	Rubber sleeve	1	

EWP=Easy wear part (易损件)

A50900-1015000/发动机起动辅助装置总成 Engine Start Auxiliary Device Assembly

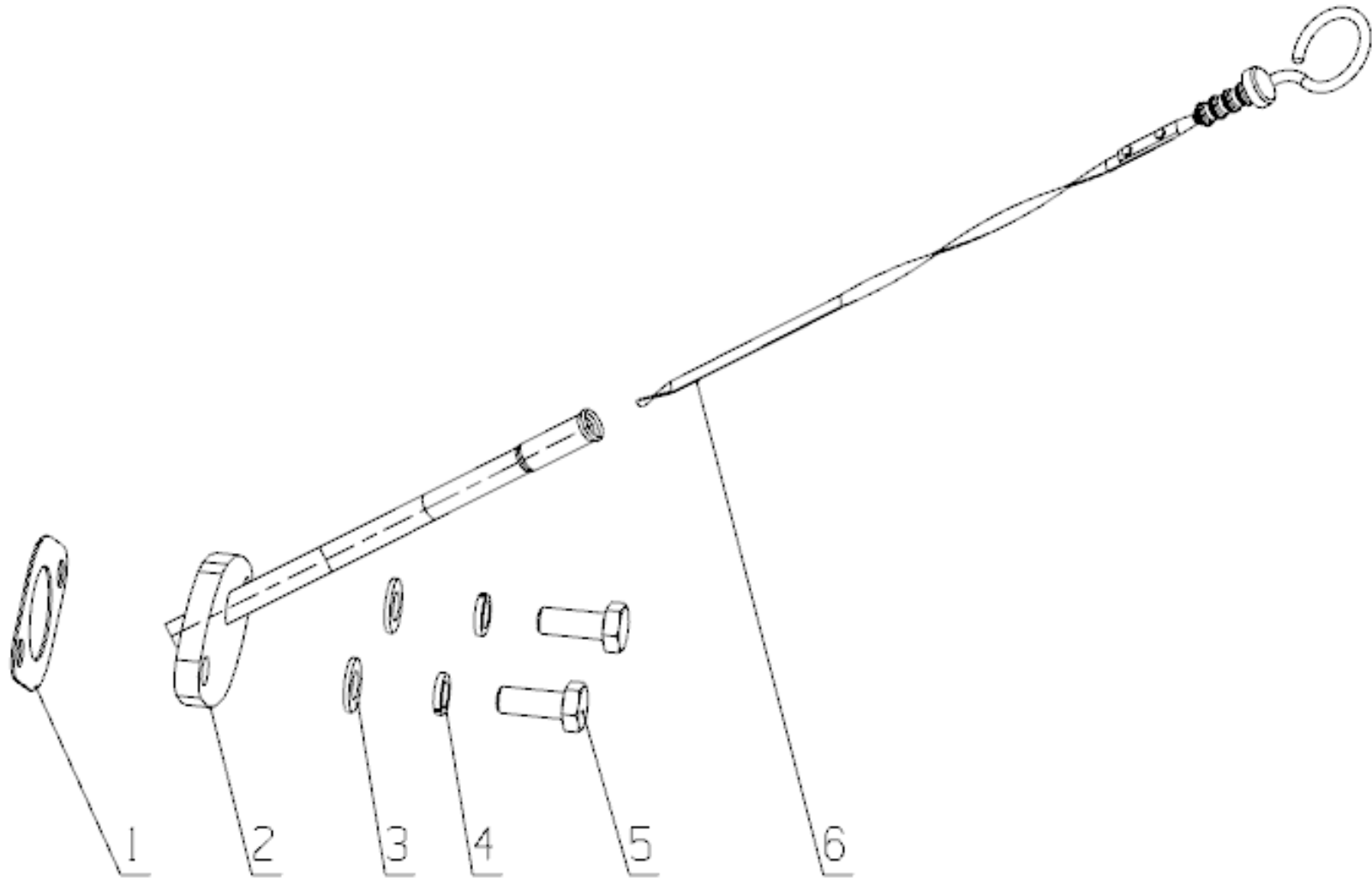


A50900-1015000/发动机起动辅助装置总成 Engine Start Auxiliary Device Assembly

序号 NO.	图号 Part No.	名 称	Description	数量 Qty	备注 Remark
1	JX9T00-1015050A	加热器	Pre-heating part	1	
2	Q/YC149-6	复合式密封垫圈 6	Composite sealing washer 6	1	易损件 EWP
3	Q1840618	螺栓 M6×18	Bolt M6×18	1	

EWP=Easy wear part (易损件)

AVJ00-1028000/油标尺总成 Oil Dipstick Assembly

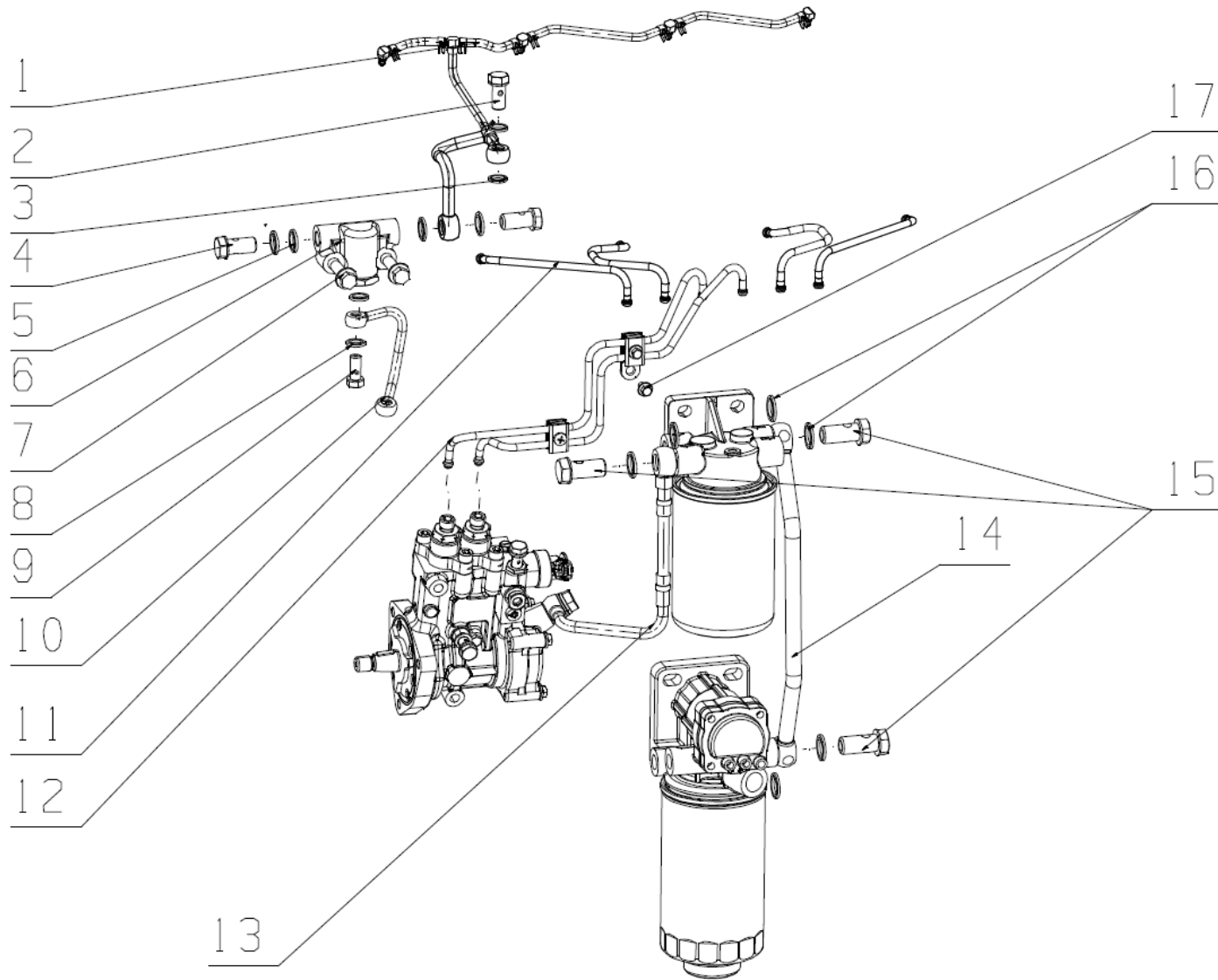


AVJ00-1028000/油标尺总成 Oil Dipstick Assembly

序号 NO.	图号 Part No.	名 称	Part Name	数量 Qty	备注 Remark
1	150-1013107	法兰垫片	Flange gasket	1	易损件 EWP
2	AVJ00-1028090A	油标尺套管组件	Oil dipstick sleeve pipe subassembly	1	
3	Q40110	垫圈 10	Washer 10	2	
4	Q40310	垫圈 10	Washer 10		
5	Q150B1025	螺栓 M10X25	Bolt M10×25	2	
6	AVJ00-1028140	油标尺组件	Oil dipstick subassembly	1	

EWP=Easy wear part (易损件)

A51KS8-1104000 / 供给系管路总成 Fuel Supply lines Assembly

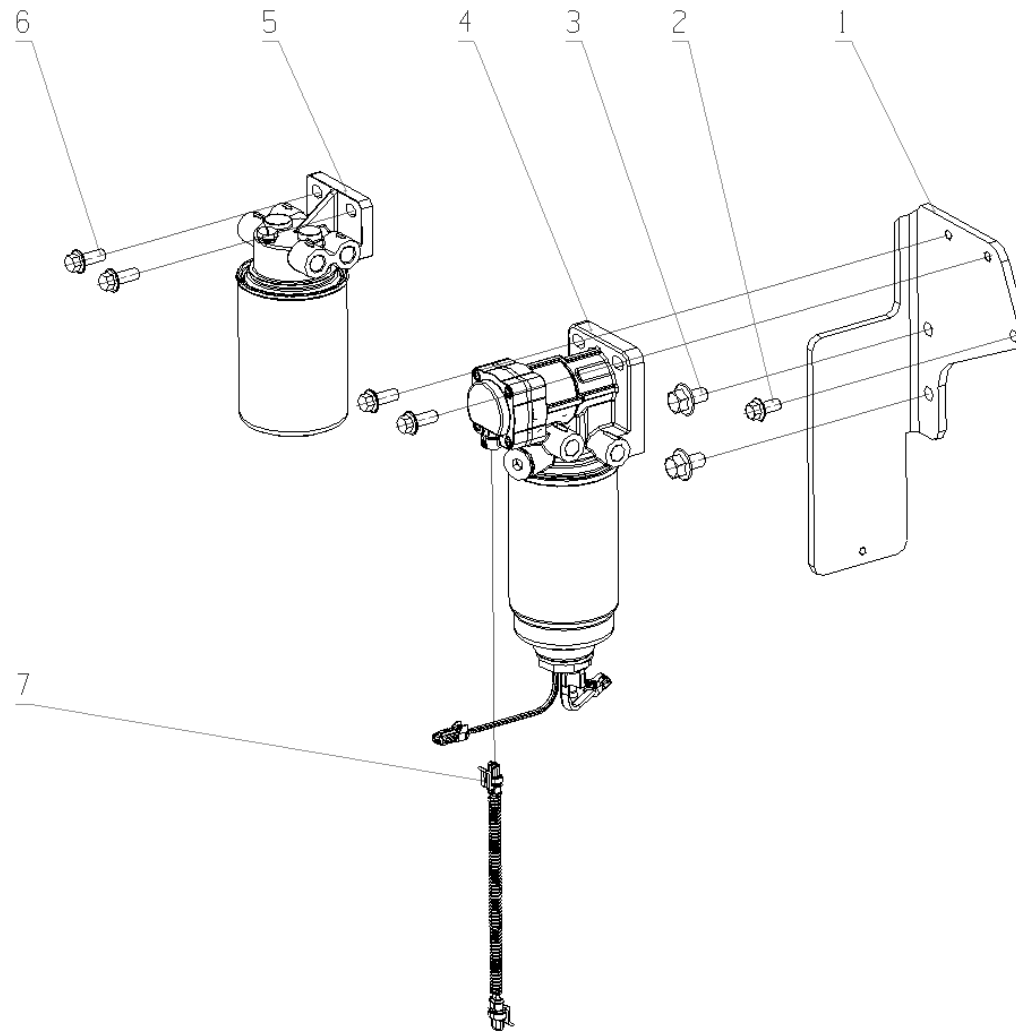


A51KS8-1104000 / 供给系管路总成 Fuel Supply lines Assembly

序号 NO.	图号 Part No.	名 称	Part Name	数量 Qty	备注 Remark
1	A50000-1104200B	回油管部件	Fuel return pipe	1	
2	S5500-1104003	过油螺栓	Oil hollow bolt	1	
3	Q/YC149-12	复合式密封垫圈 12	Compound Seal washer12	2	易损件 EWP
4	Q/YC901-1C1415	铰接螺栓 M14×1.5	Swing Bolt M14×1.5	2	
5	Q/YC149-14	复合式密封垫圈 14	Compound Seal washer14	4	易损件 EWP
6	A510T2-1104540C	燃油分配器组件	Fuel oil distributor module	1	
7	Q1841035	螺栓 M10×35	Bolt M10×35	2	
8	Q/YC149-10	复合式密封垫圈 10	Compound Seal washer14	2	易损件 EWP
9	Q/YC901-1C1010	铰接螺栓 M10×1	Swing Bolt M10×1	1	
10	A50000-1104700B	喷油泵至燃油分配器油管	Injection Pump to fuel distributor	1	
11	A50000-1104100	高压油管部件	High pressure fuel pipe	1	
12	A50000-1104L00	油泵至油轨油管部件	Oil pump to the fuel rail tubing parts	1	
13	A50000-1104D00	柴滤器至喷油泵油管部件	Fuel line components from diesel filter to fuel	1	
14	A65000-1104900SF1	进油软管部件	Oil inlet pipe tube	1	
15	Q/YC901-1C1615	铰接螺栓 M16×1.5	Swing Bolt M16×1.5	3	
16	Q/YC149-16	复合式密封垫圈 16	Compound Seal washer16	6	易损件 EWP
17	Q1840612	螺栓 M6×12	Bolt M6×12	1	

EWP=Easy wear part (易损件)

A509TB-1105000/柴油滤清器总成 Fuel filter assembly

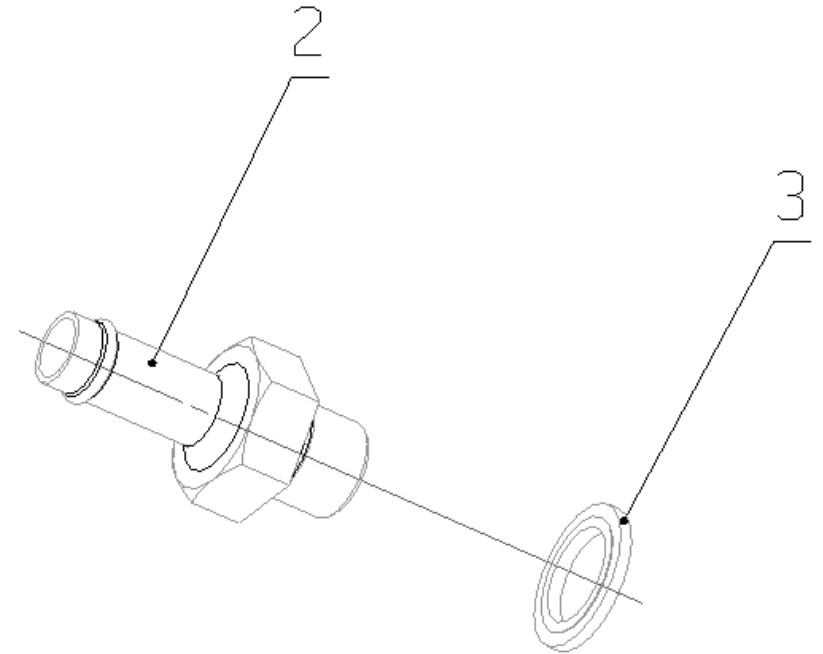
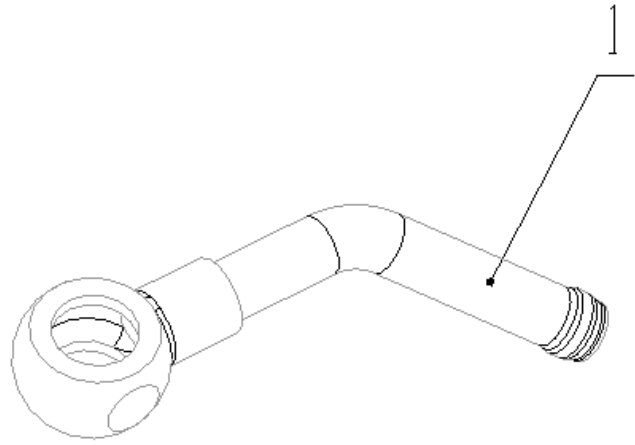


A509TB-1105000/柴油滤清器总成 Fuel filter assembly

序号 NO.	图号 Part No.	名 称	Part Name	数量 Qty	备注 Remark
1	A50KT9-1105004	柴油粗滤器支架	Fuel filter holder	1	
2	Q1841020	螺栓 M10×20	Bolt M10×20	1	
3	Q1841220	螺栓 M12×20	Bolt M12×20	2	
4	A60K00-1105300A	预滤器部件	Prefilter	1	滤芯图号 A60100-1105350A
5	A50000-1105100B	柴油滤清器	Fuel filter	1	滤芯图号 A50000-1105140
6	Q1841025	螺栓 M10×25	Bolt M10×25	4	
7	A60DY2-3823271	过渡线	Transition line	1	

EWP=Easy wear part (易损件)

A509TB-A104000/进油软管总成 Oil Inlet Hose Assembly

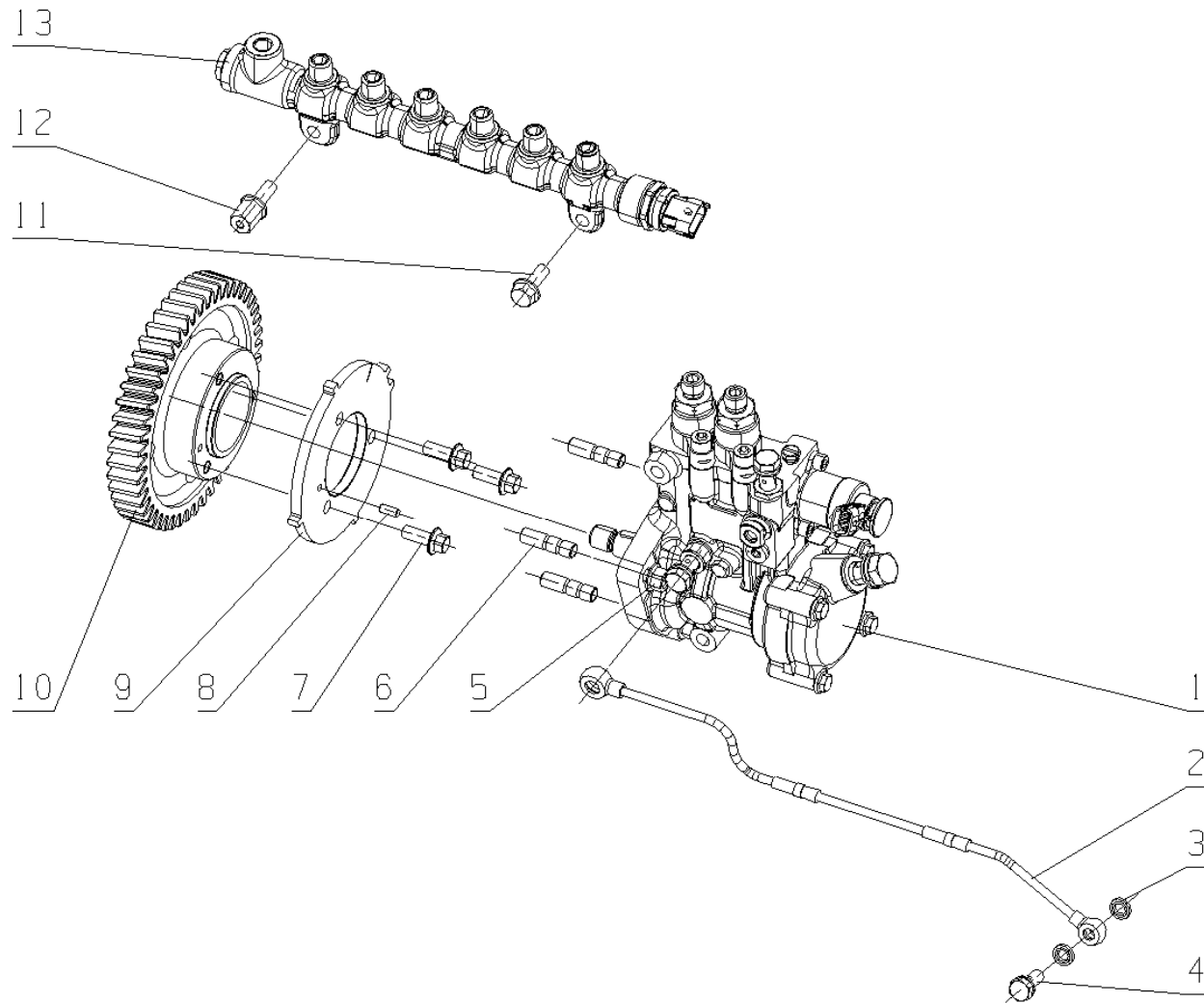


A509TB-A104000/进油软管总成 Oil Inlet Hose Assembly

序号 NO.	图号 Part No.	名 称	Part Name	数量 Qty	备注 Remark
1	F7100-1104440B	油泵进油接头焊接件	Oil inlet joint of oil pump	1	
2	A510T1-1104952	进油接头	Oil inlet joint	1	
3	Q/YC149-16	复合式密封垫圈 16	Composite sealing washer 16	1	易损件 EWP

EWP=Easy wear part (易损件)

A50KT2-1111000/喷油泵总成 Fuel Injection Pump Assembly

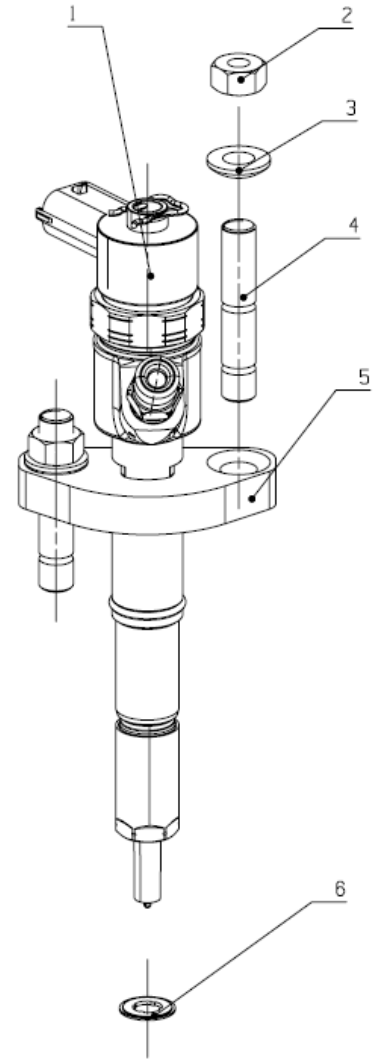
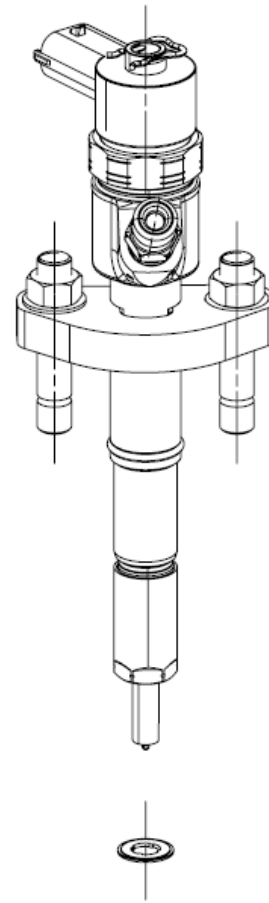
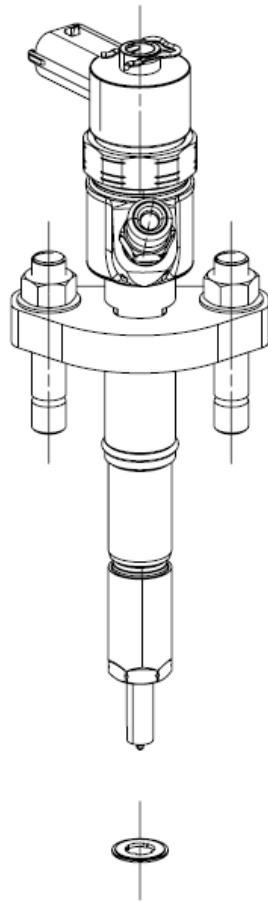
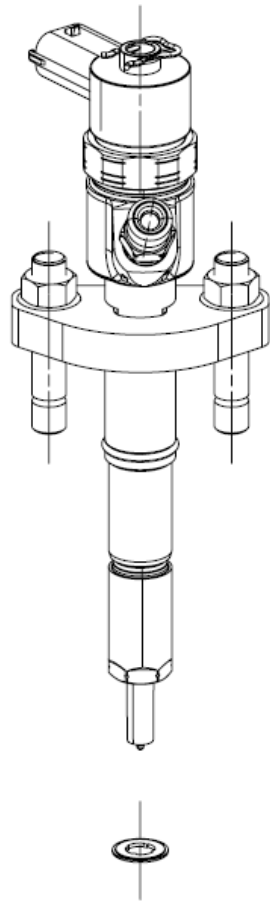


A50KT2-1111000/喷油泵总成 Fuel Injection Pump Assembly

序号 NO.	图号 Part No.	名 称	Part Name	数量 Qty	备注 Remark
1	J8M00-1111100B-A38	喷油泵	Fuel injection pump	1	
2	A51KS8-1111350	机油进油管组件	Oil pipeline subassembly	1	
3	Q/YC149-8	复合式密封垫圈 8	Compound seal washer 8	2	易损件 EWP
4	Q/YC901-1C0810	铰接螺栓 M8×1	Hinge bolt M8×1	1	
5	Q32008	螺母 M8	Nut M8	3	
6	Q1200825TF2	螺柱 M8×25	Stud M8×25	3	
7	Q1840820	螺栓 M8×20	Bolt M8×20	3	
8	YC24-0512	圆柱销 5×12	Pin 5×12	1	
9	A50900-1111035A	正时信号盘	Timing dial	1	
10	A50000-1111003	喷油泵齿轮	Fuel injection pump gear	1	
11	Q1840822TF2	螺栓 M8×22	Bolt M8×22	1	
12	DV602-3823213	线束螺栓	The wiring harness bolt	1	
13	A50000-1111A00	共轨管部件	common rail	1	

EWP=Easy wear part (易损件)

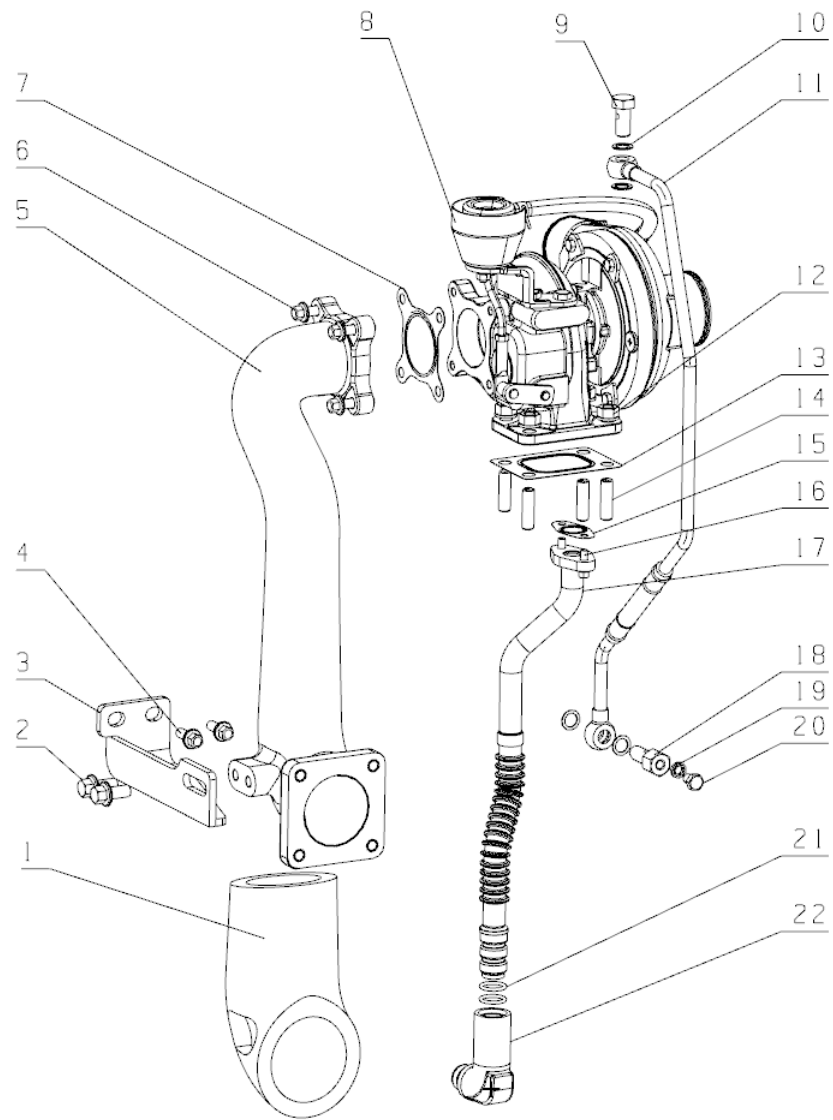
A51E00-1112000/喷油器总成 Fuel Injector Assembly



A51E00-1112000/喷油器总成 Fuel Injector Assembly

序号 NO.	图号 Part No.	名 称	Part Name	数量 Qty	备注 Remark
1	A50000-1112100A-A38	喷油器部件	Injector parts	4	
2	Q340B08	螺母 M8	Nut M8	8	
3	GB/T849-8	垫圈 8	Washer8	8	易损件 EWP
4	Q1200840	螺柱 M8×40	Stud M8×40	8	
5	A50000-1112005A	固定板	Locking plate	4	
6	J5600-1112001D	喷油器垫片	Injector gasket	4	

A51000-1118000/增压器总成 Turbocharger Assembly



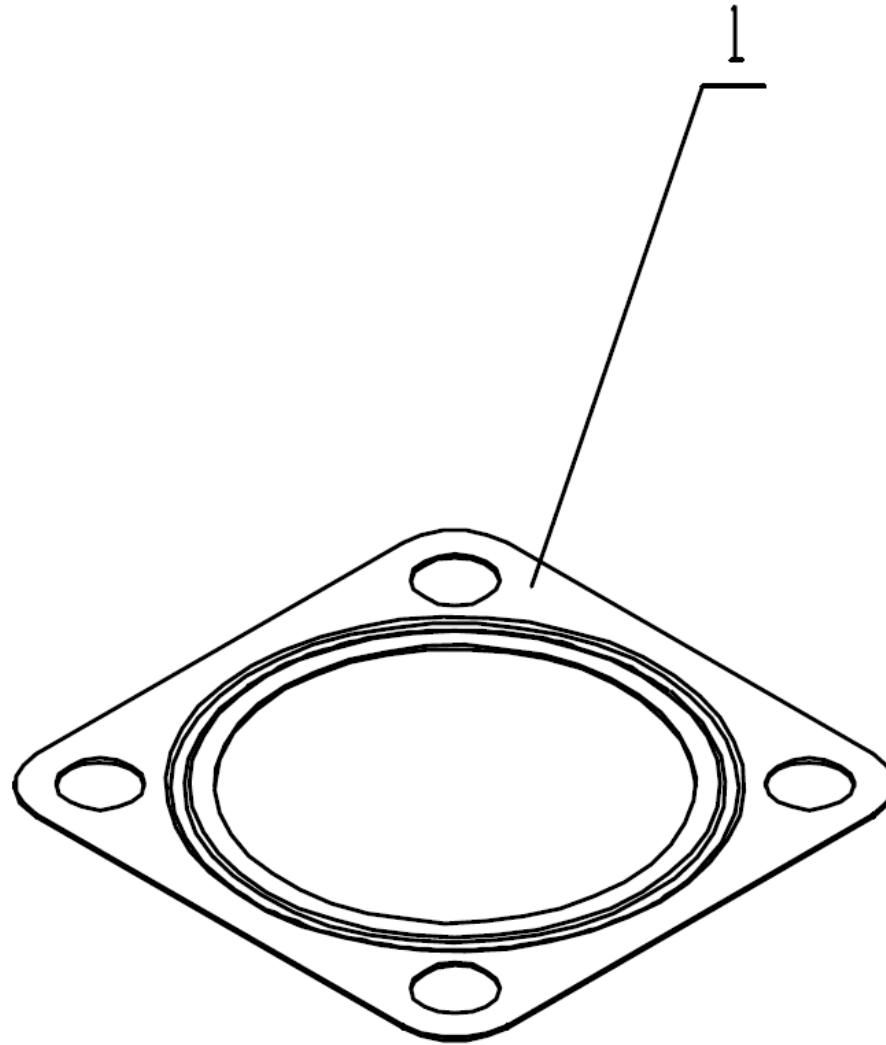
A51000-1118000/增压器总成 Turbocharger Assembly

序号 NO.	图号 Part No.	名 称	Part Name	数量 Qty	备注 Remark
1	AV7T0-1118506B	涡轮后接管隔热套	Turbine rear nozzles heat shield	1	
2	YC3-1020TF2	螺栓 M10×20	Bolt M10×32	2	
3	B9XT0-1008212A	支架	Holder	1	
4	YC3-0820TF2	螺栓 M8×20	Bolt M8×20	2	
5	B9XT0-1008203A	涡轮后排气接管	Turbine rear pipe	1	
6	YC3-0830TF2	螺栓 M8×30	Bolt M10×30	4	
7	B9200-1118003	涡轮出口垫片	Turbine outlet gasket	1	易损件 EWP
8	A51000-1118100A-752	增压器	Turbocharger	1	
9	430-1111034	接头螺栓	Joint bolt	1	
10	Q/YC901-3C12	垫圈 12	Washer 12	4	
11	AV700-1118240	进油管焊接组件	Oil inlet pipe parts	1	
12	K6000-1008206	螺母	Nut	4	
13	FN100-1118002	增压器垫片	Turbocharger gasket	1	
14	F7400-1118001	双头螺柱	Threaded stud	4	
15	G3E00-1118301	垫片	Gasket	1	易损件 EWP
16	Q1840616TF2	螺栓 M6×16	Bolt M6×16	2	
17	A50900-1118340	回油管焊接组件	Oil return pipe welded part	1	
18	D0200-1118031	过油螺栓	Oil drain bolt	1	
19	Q/YC149-8	复合式密封垫圈 8	Composite seal gasket 8	1	易损件 EWP

20	Q/YC198-8	螺塞 M8×1	Screw plug M8×1	1	
21	YC208-B01700F	O 形圈 2.65×17	o-ring2.65×17	2	易损件 EWP
22	AV7T2-1118352	接头	Joint	1	

EWP=Easy wear part (易损件)

AVKT6-1201000/消声器总成 Muffler assembly atlas

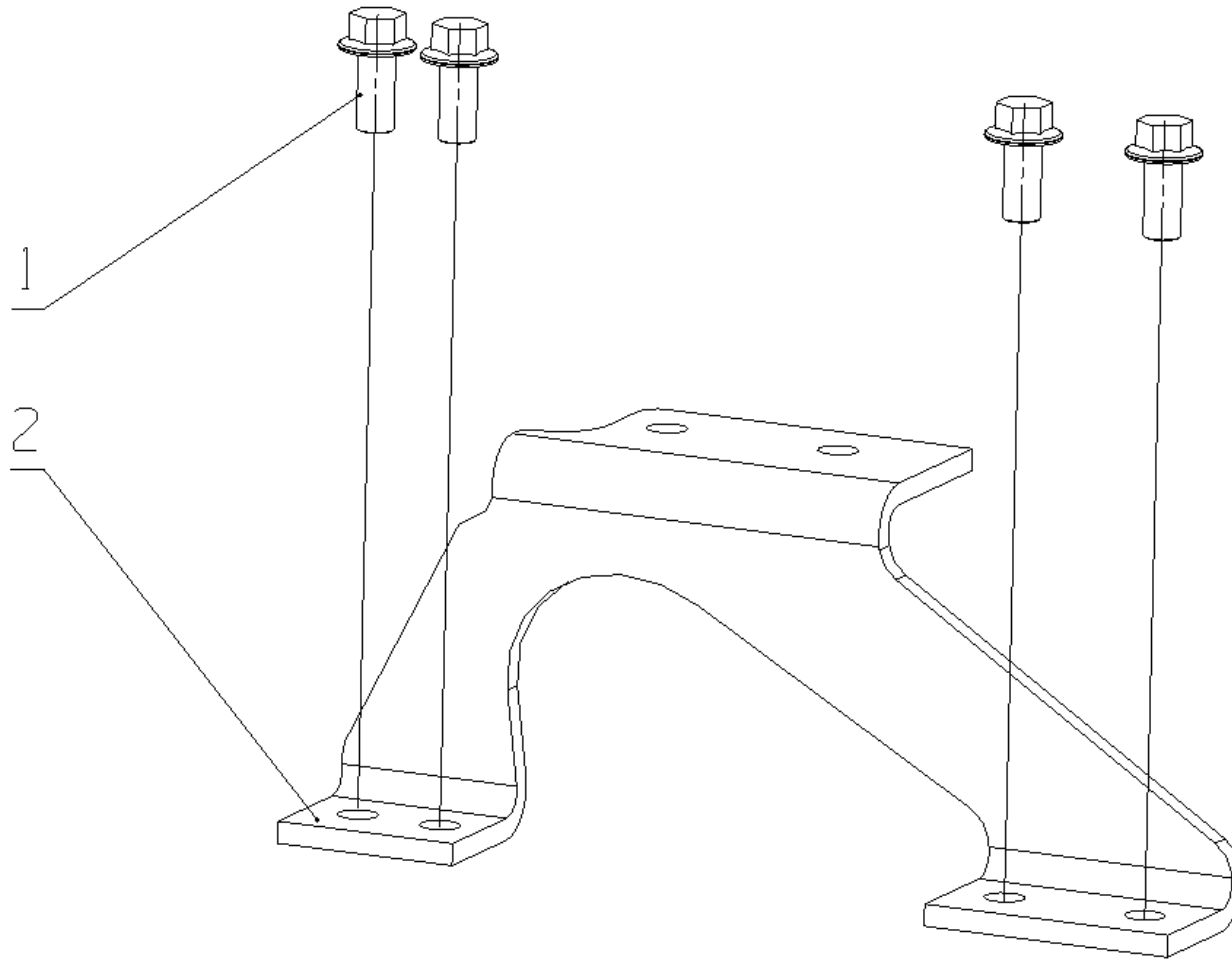


AVKT6-1201000/消声器总成 Muffler assembly atlas

序号 NO.	图号 Part No.	名 称	Part Name	数量 Qty	备注 Remark
1	B9212-1201002	消声器垫片	Muffler gasket	2	易损件 EWP

EWP=Easy wear part (易损件)

AVJ0T0-1207000/废气再循环系统总成 Exhaust Gas Recirculation Assembly

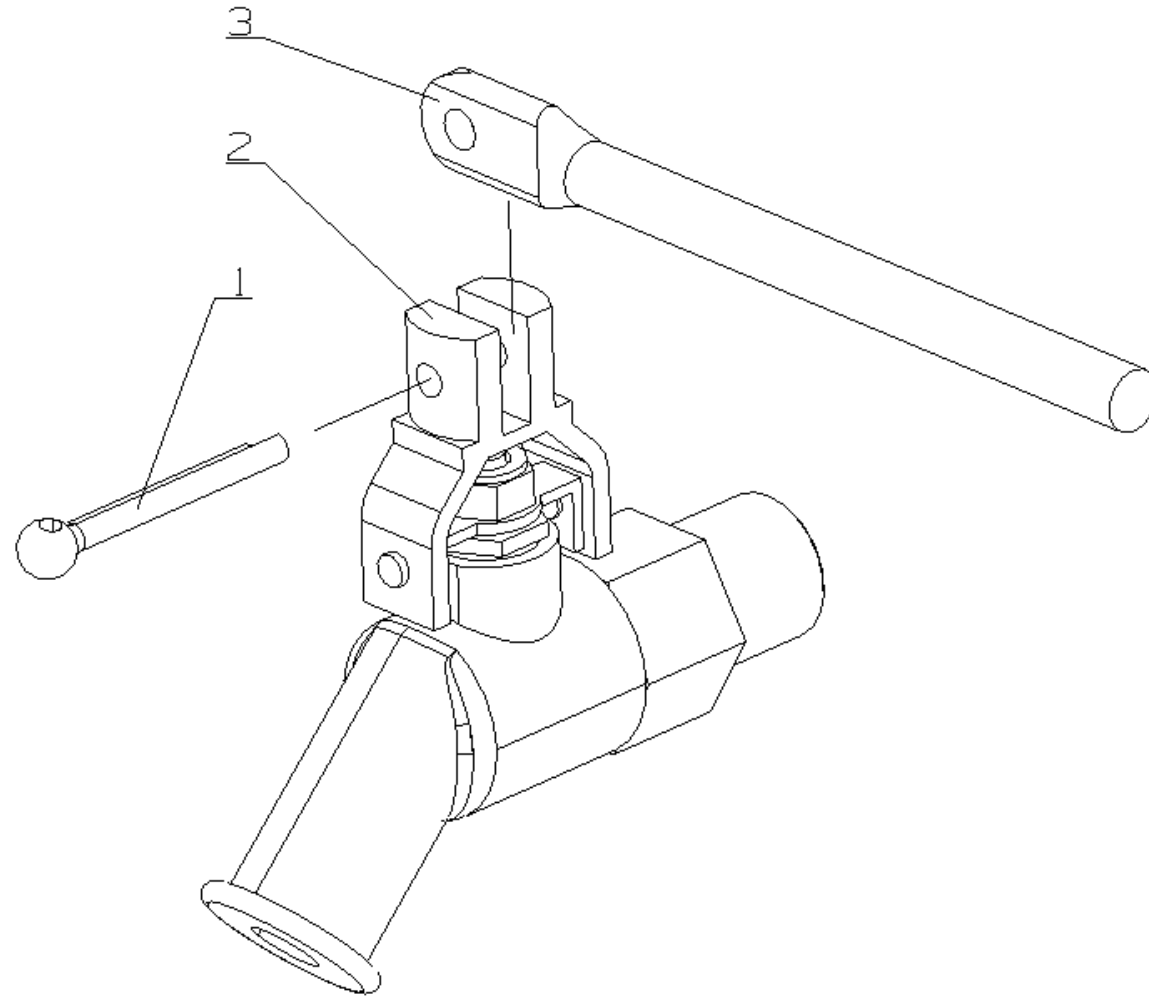


AVJ0T0-1207000/废气再循环系统总成 Exhaust Gas Recirculation Assembly

序号 NO.	图号 Part No.	名 称	Part Name	数量 Qty	备注 Remark
1	Q1841022	螺栓 M10×22	Bolt M10×22	4	
2	AVE00-1207342B	连接管支架	Connecting bracket	1	

EWP=Easy wear part (易损件)

631-1305000/放水开关总成 Water Drain Assembly

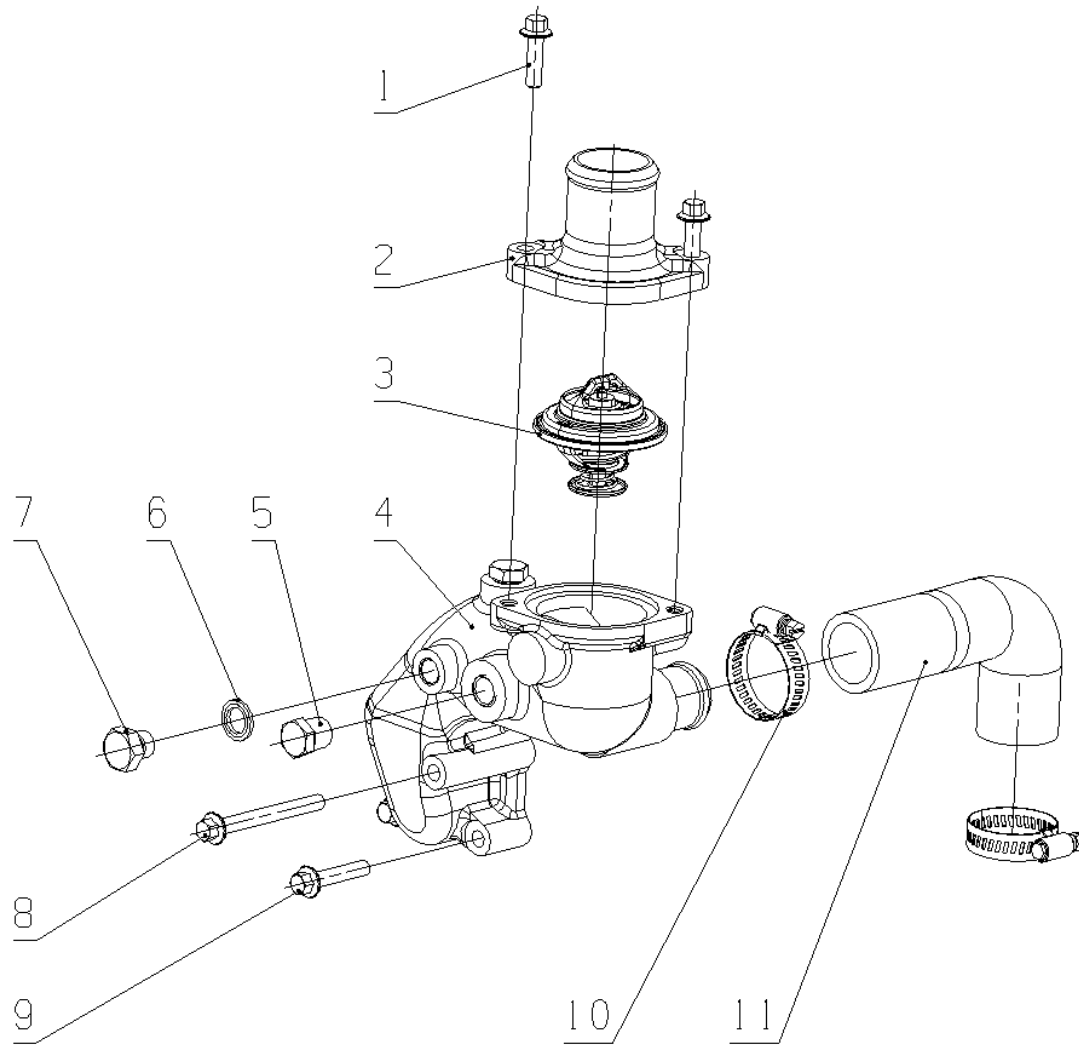


631-1305000/放水开关总成 Water Drain Assembly

序号 NO.	图号 Part No.	名 称	Part Name	数量 Qty	备注 Remark
1	Q5003220	销 3.2×20	Pin 3.2×20	1	
2	J1000-1305040	放水阀组件	Water Drain valve assembly	1	
3	150-1305015	操纵杆	Holding rod	1	

EWP=Easy wear part (易损件)

A50000-1306000/调温器总成 Thermostat assembly

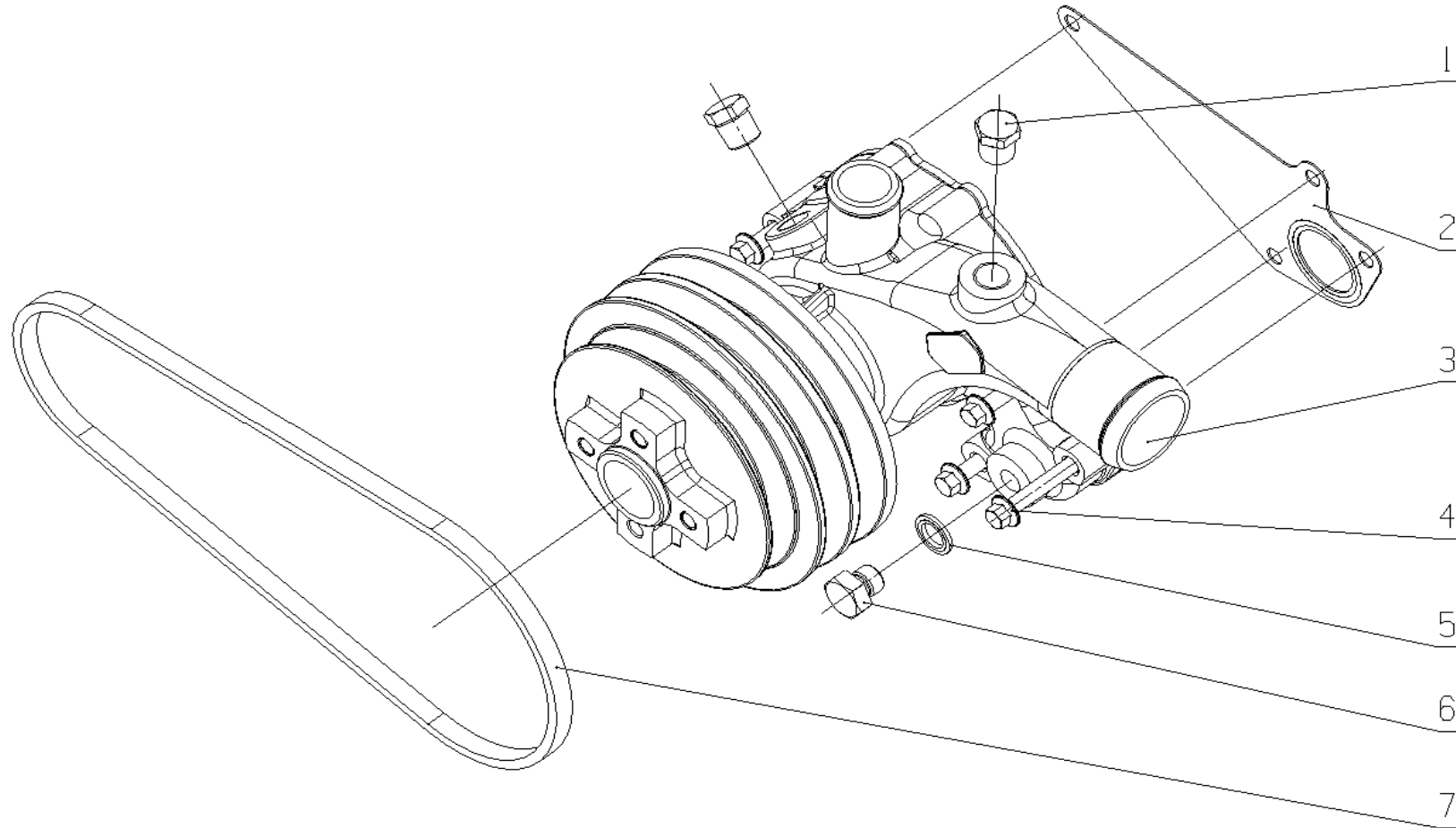


A50000-1306000/调温器总成 Thermostat Assembly

序号 NO.	图号 Part No.	名 称	Part Name	数量 Qty	备注 Remark
1	Q1840828TF2	螺栓 M8×28	Bolt M8×28	2	
2	A50000-1306001	调温器盖	Thermostat cover	1	
3	A51E00-1306004A	调温器	Thermostat cover	1	
4	A50000-1306003B	调温器座	Thermostat seat	1	
5	Q618B03	螺塞 NPT 3/8	Screw plug NPT 3/8	2	
6	Q/YC149-14	复合式密封垫圈 14	Compound sealing washer 14	1	易损件 EWP
7	Q/YC198-14	螺塞	Screw plug	1	
8	Q1840875TF2	螺栓 M8×75	Bolt M8×75	1	
9	Q1840840TF2	螺栓 M8×40	Bolt M8×40	3	
10	Q67645	环箍 45	Loop hoop 45	2	
11	A50MT3-1306005	回水胶管	Water return hose	1	

EWP=Easy wear part (易损件)

AVJ00-1307000/水泵总成 Water Pump Assembly

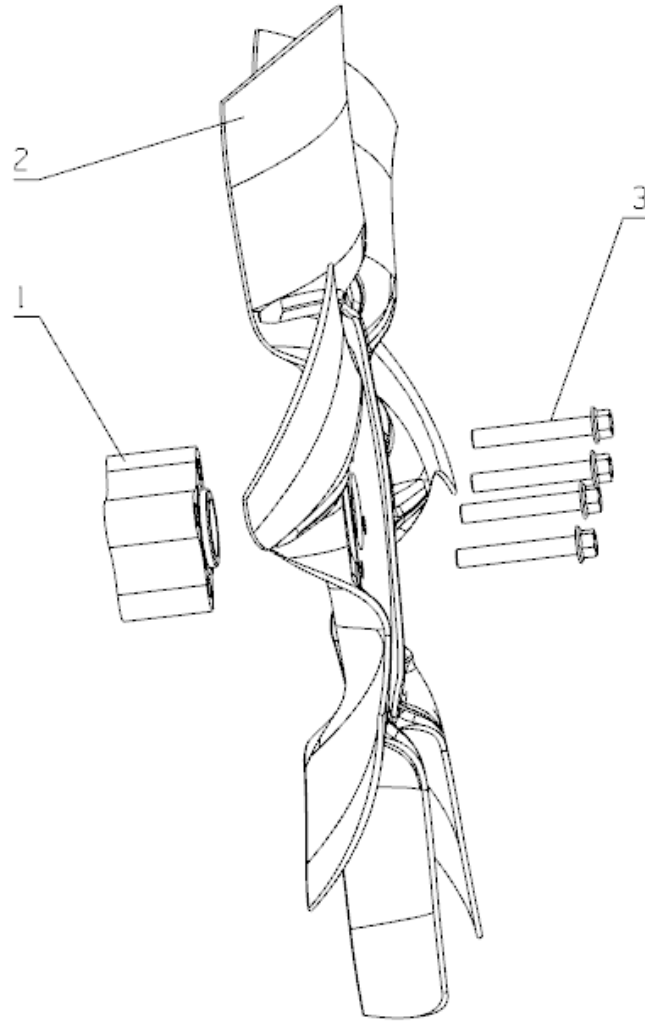


AVJ00-1307000/水泵总成 Water Pump Assembly

序号 NO.	图号 Part No.	名 称	Part Name	数量 Qty	备注 Remark
1	Q618B03	螺塞 NPT 3/8	Screw plug NPT3/8	2	
2	B9900-1307001	水泵垫片	Water pump gasket	1	易损件 EWP
3	A9NS3-1307100B	水泵	Water pump	1	
4	Q1840850TF2	螺栓 M8×50	Bolt M8×50	4	
5	Q/YC149-14	复合式密封垫圈 14	Compound seal washer 14	1	易损件 EWP
6	Q/YC198-14	螺塞	Screw plug	1	
7	YC80-AV17-1250B	V 带	V belt	2	

EWP=Easy wear part (易损件)

AVJ00-1308000/风扇总成 Fan Assembly

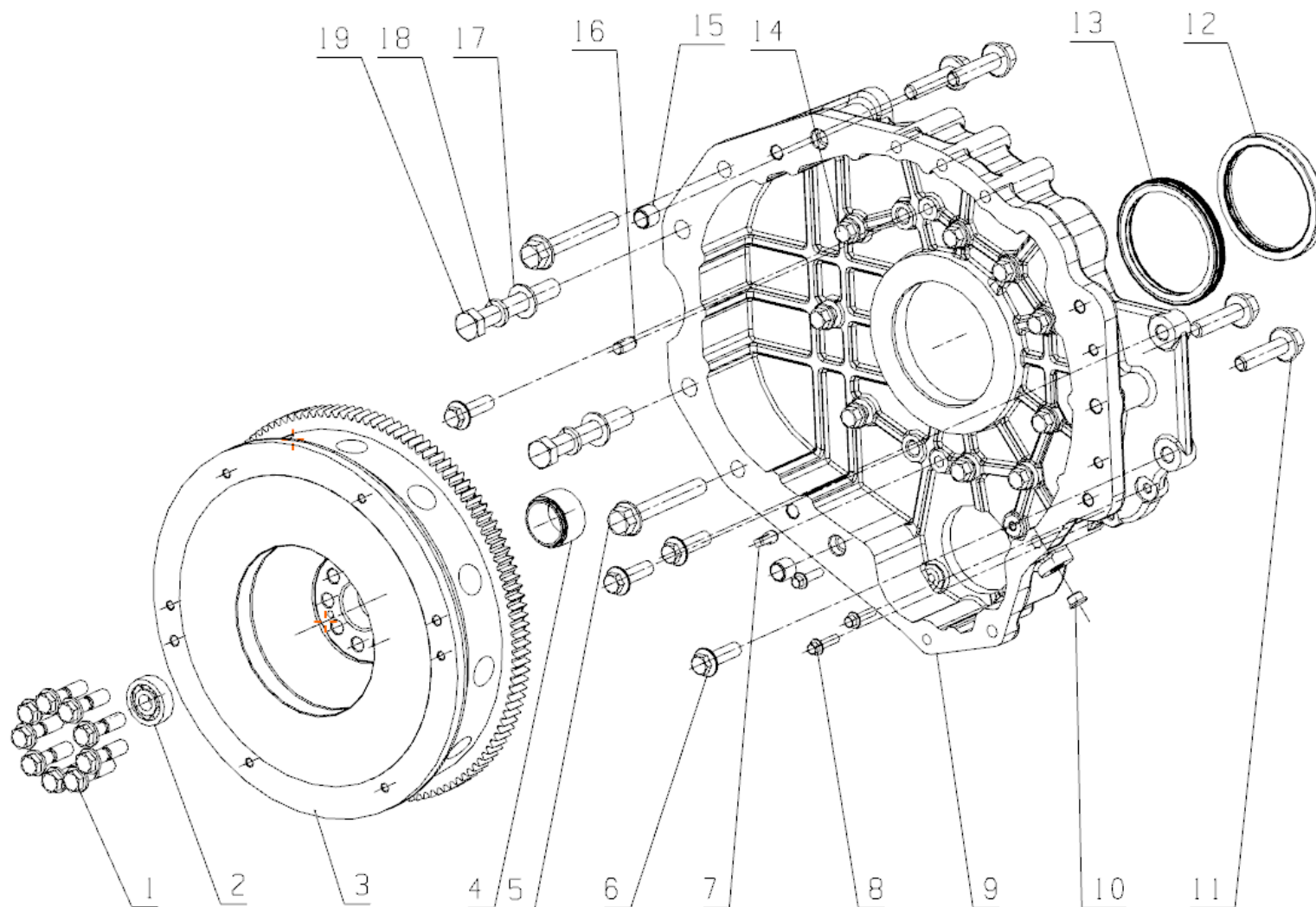


AVJ00-1308000/风扇总成 Fan Assembly

序号 NO.	图号 Part No.	名 称	Part Name	数量 Qty	备注 Remark
1	F31D8-1308102A	垫块	block	1	
2	AVJ00-1308150A	风扇组件	Fan subassembly	1	
3	Q1841065TF2	螺栓 M10×65	Bolt M10×65	4	

EWP=Easy wear part (易损件)

AVJ00-1600000/动力输出总成 Power Output Assembly

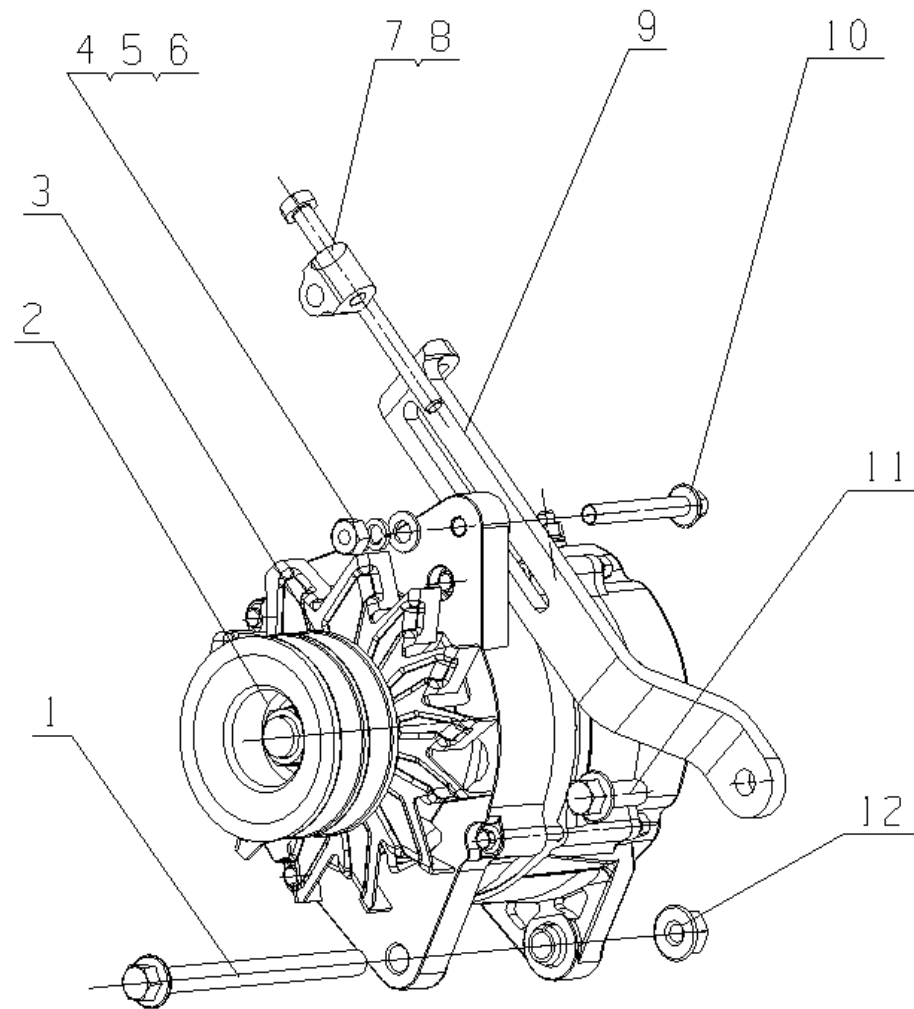


AVJ00-1600000/动力输出总成 Power Output Assembly

序号 NO.	图号 Part No.	名 称	Part Name	数量 Qty	备注 Remark
1	M3000-1005363A	飞轮螺栓	The flywheel bolt	9	
2	GB/T276-6303-2RS1	滚动轴承 6303-2RS1	Rolling bearings 6303-2RS1	1	
3	AVJ00-1005360C	飞轮及齿圈组件	Flywheel and gear ring parts	1	
4	AVJ00-1005011SF2	轴承衬套	Bearing bush	1	
5	Q18416110TF2	螺栓 M16×110	Bolt M16×110	2	
6	Q1841445TF2	螺栓 M14×45	Bolt M14×45	4	
7	6105Q-1600011	扁销	Flat pin	1	
8	Q1840830TF2	螺栓 M8×30	Bolt M8×30	3	
9	AVJ00-1600401	飞轮壳	Flywheel case	1	
10	Q72516148	塑料堵塞 M16	Plastic blockage M16	1	
11	Q1841660TF2	螺栓 M16×60	Bolt M16×60	4	
12	YC209-C105125FL	油封 105×125	Oil seal 105×125	1	选装
13	YC209-C105125PL	油封 105×125	Oil seal 105×125	1	选装
14	Q1841240TF2	螺栓 M12×40	Bolt M12×40	9	
15	B8805-1002121	定位套	Positioning sleeve	2	
16	YC24-B1224	圆柱销 12×24	Cylindrical pin 12×24	1	
17	Q40118	垫圈 18	Washer18	2	
18	Q40318	垫圈 18	Washer18	2	
19	Q150B18120	螺栓 M18×120	Bolt M18×120	2	

EWP=Easy wear part (易损件)

AVJ00-3701000/发电机总成 Alternator assembly

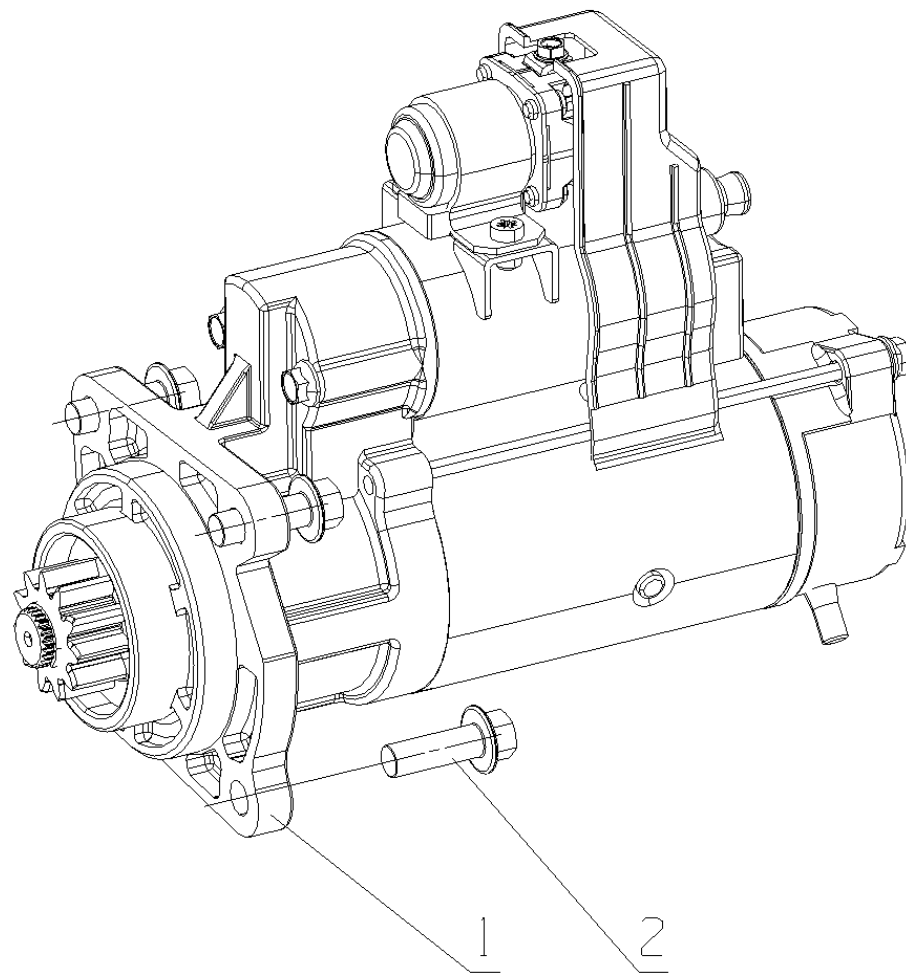


AVJ00-3701000/发电机总成 Alternator assembly

序号 NO.	图号 Part No.	名 称	Part Name	数量 Qty	备注 Remark
1	Q18410120TF2	螺栓 M10×120	Bolt M10×120	1	
2	JX400-3701100C	发电机	Generator	1	
3	YC80-SPA-800A	V 带	V belt	1	
4	Q340B08	螺母 M8	Nut M8	1	
5	Q40308	垫圈 8	Washer 8	1	易损件 EWP
6	Q40108	垫圈 8	Washer 8	1	易损件 EWP
7	FG3S1-3701203	张紧螺栓	Bolt	1	
8	F32LA-3407103	垫块	Washer	1	
9	AV700-3701052	调节板	Adjusting plate	1	
10	Q1840855TF2	螺栓 M8×55	Bolt M8×55	1	
11	Q1841025TF2	螺栓 M10×25	Bolt M10×25	1	
12	Q32010	螺母 M10	Nut M10	1	

EWP=Easy wear part (易损件)

AVJ00-3708000/起动机总成 Starter Assembly

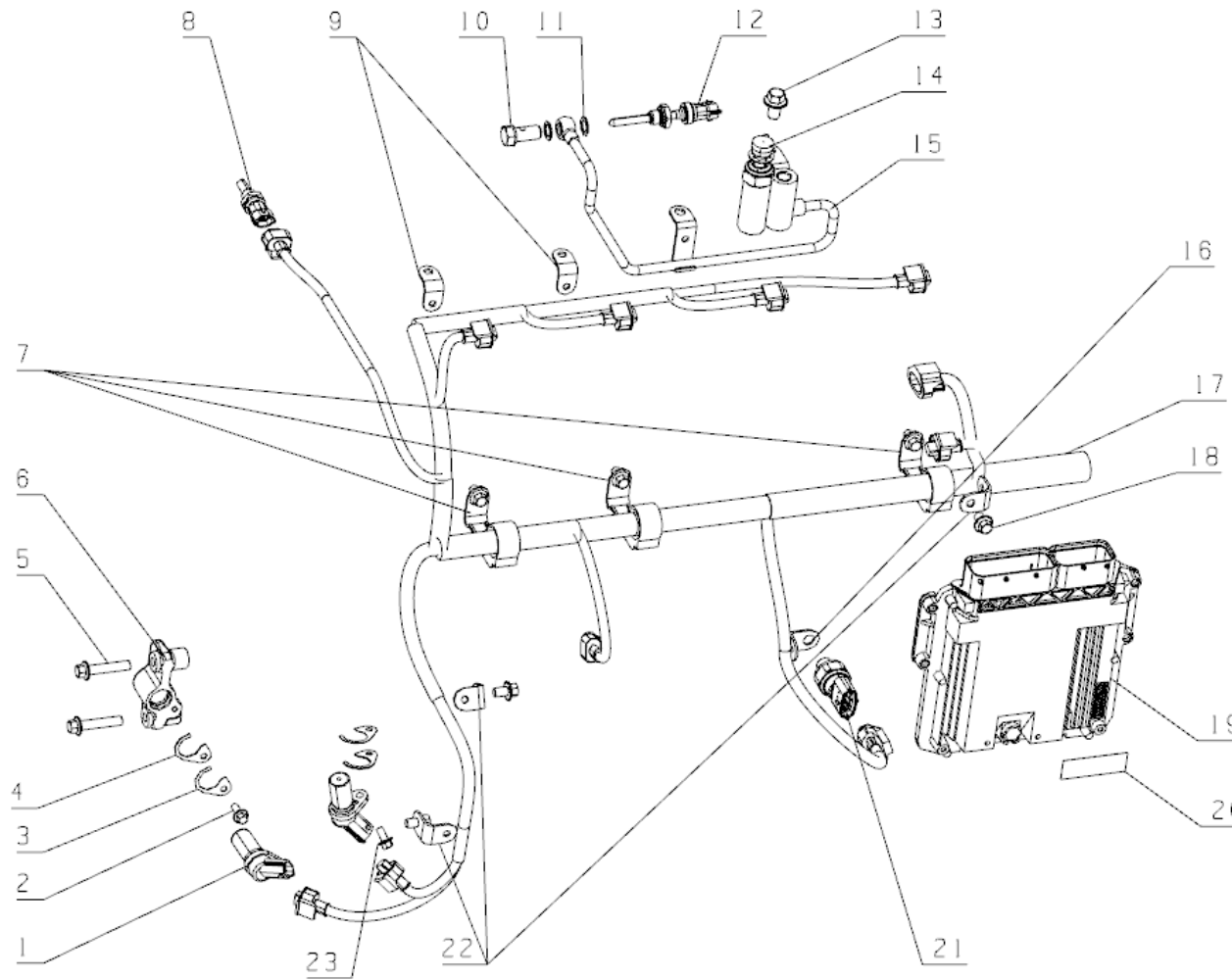


AVJ00-3708000/起动机总成 Starter Assembly

序号 NO.	图号 Part No.	名 称	Part Name	数量 Qty	备注 Remark
1	AVJ00-3708100A	起动机	Starter	1	
2	Q1841030	螺栓 M10×30	Bolt M10×30	3	

EWP=Easy wear part (易损件)

A510T8-3823000/控制系统总成 Controlling System Assembly



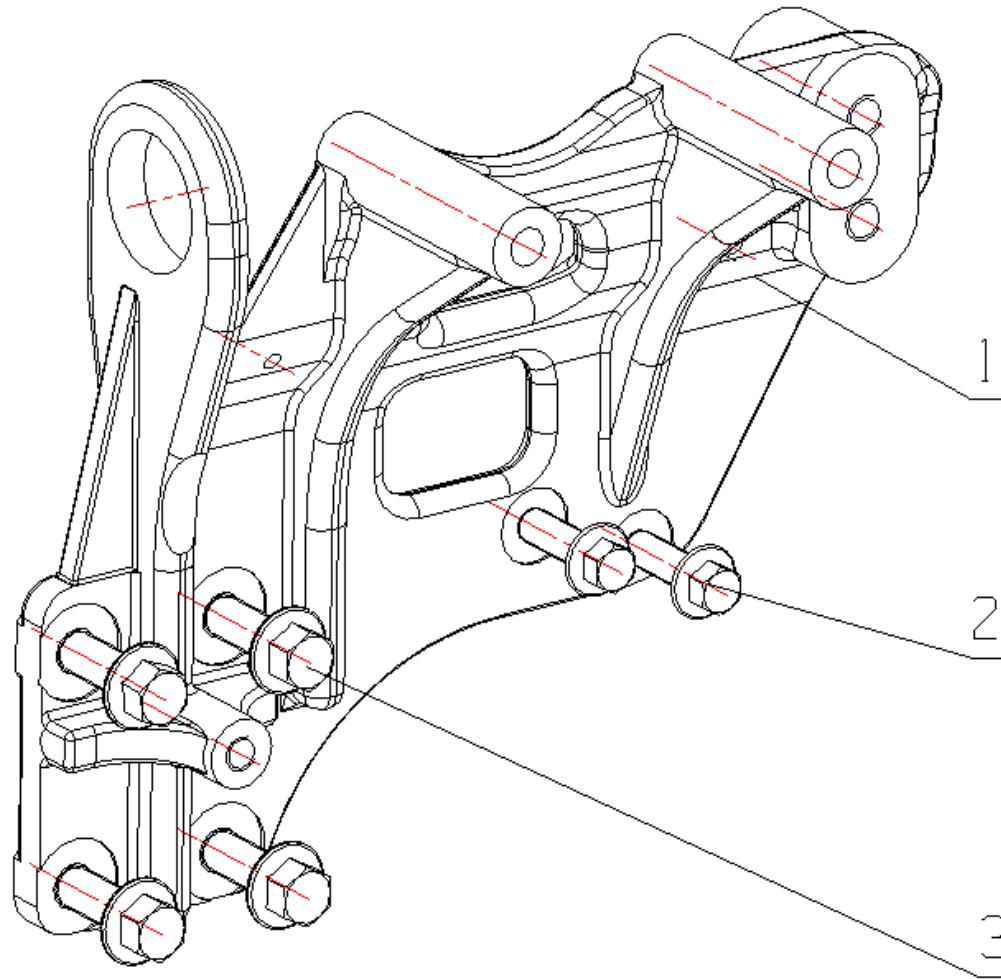
A510T8-3823000/控制系统总成 Controlling System Assembly

序号 NO.	图号 Part No.	名 称	Part Name	数量 Qty	备注 Remark
1	L4700-3823170A	曲轴转速传感器	Crankshaft speed sensor	2	
2	Q1840615	螺栓 M6×15	Bolt M6×15	1	
3	J5600-3800312	转速传感器支架调整垫片 II	Speed sensor adjust pad II	2	
4	J5600-3800311	转速传感器支架调整垫片 I	Speed sensor adjust pad I	2	
5	Q1840840	螺栓 M8×40	Bolt M8×40	2	
6	A50000-3823178A	曲轴转速传感器支架	Crankshaft speed sensor adjust	1	
7	A50000-3823201	线束卡 I	Wiring harness fastener I	3	
8	L4700-3823180A	水温传感器	Water temperature sensor	1	
9	YM3000-3823202	线束卡 II	Wiring harness fastener II	2	
10	Q/YC901-1C12125	铰接螺栓 M12×1.25	Swing Bolt M12×1.25	1	
11	Q/YC901-3C12	垫圈 12	Washer 12	2	
12	D8Y00-38231W0	进气温度传感器	Intake air temperature sensor	1	
13	Q1841016	螺栓 M10×16	Bolt M10×16	1	
14	D8Y00-3823140	增压压力传感器	Intake manifold pressure sensor	1	
15	A51000-3823102SF2	传感器安装座	Sensor mount	1	
16	A510T8-3823250A	线束卡 III	Wiring harness fastener III	1	
17	A510T8-3823250A	发动机线束组件	Engine wiring harness	1	
18	Q1840812	螺栓 M8×12	Bolt M8×12	6	
19	A50000-3823351	控制器	ECU	1	

20	G6000-3823353	机型软件标签	The Engine software TAB	1	
21	J3D00-38231G0A	机油压力温度传感器	Oil pressure temperature sensor	1	
22	E2100-3823204	线束卡IV	Wiring harness fastener IV	3	
23	Q1840612	螺栓 M6×12	Bolt M6×12	1	

EWP=Easy wear part (易损件)

AVJ00-8104000/空调压缩机总成 air-conditioning compressor Assembly



AVJ00-8104000/空调压缩机总成 air-conditioning compressor Assembly

序号 NO.	图号 Part No.	名 称	Part Name	数量 Qty	备注 Remark
1	AYH2S1-8104007A	空调机支架	Air-conditioner Bracket	1	
2	Q1841030TF2	螺栓 M10×30	Bolt M10×30	2	
3	Q1841230TF2	螺栓 M12×30	Bolt M12×30	4	

EWP=Easy wear part (易损件)